

## Find out more



You are invited to an information session to be held on Thursday 12 February 2015

- > from 4.30pm to 6.30pm
- > at Adina Apartments 88 Flinders Street.

More detailed information about the project will be on display and the project team will be available to answer any project related questions you may have.

If you are unable to attend the information session you can provide us with your feedback, before Sunday 22 February 2015 by emailing [ptvprojects@ptv.vic.gov.au](mailto:ptvprojects@ptv.vic.gov.au) or calling 1800 800 007 (6am – midnight)



For more information or to offer feedback visit [ptv.vic.gov.au](http://ptv.vic.gov.au) or call 1800 800 007 (6am – midnight)

For the latest tram service changes, follow us on twitter [@yarratrams](https://twitter.com/yarratrams)

14131YTM.02/15. Authorised by Public Transport Victoria, 750 Collins Street, Docklands

## Improved efficiency

To help improve tram journey times, the existing safety zone at the corner of Flinders Street and Batman Avenue will be removed.

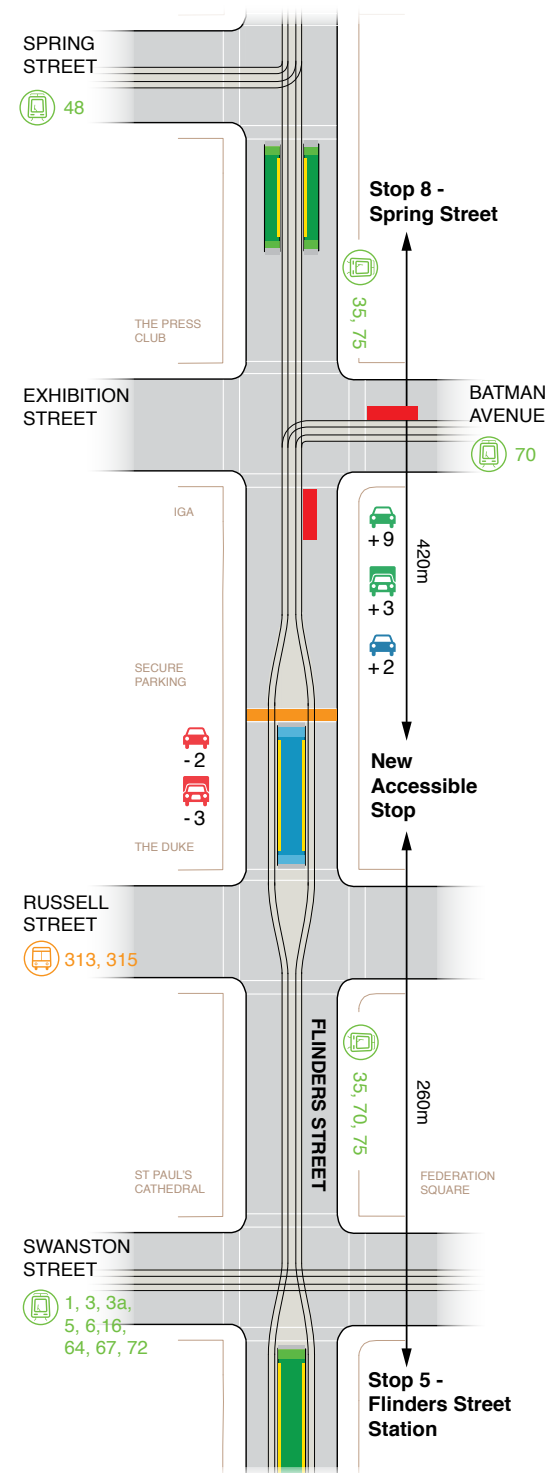
Average international standards in stop spacing are between 400m and 500m. Removing these safety zones will allow for better and more even stop spacing on Flinders Street, resulting in improved service journey time and reliability of tram services.

## Changes to Flinders Street

- > Three loading bays and two 15 minute car parks located on the north side on Flinders Street removed.
- > Two additional car parks and the reconfiguration of 12 existing car parks located on the south side of Flinders Street will provide:
  - Two disabled car parks
  - Three loading bay car parks
  - Nine two hour car parks.
- > New pedestrian crossing mid-block.

### Map legend

Existing accessible stop	Parking & Loading Zone reconfigured	New pedestrian crossing
New accessible stop	Disabled parking to be created	Tram routes
Stop to be removed	Parking & Loading Zone removal	Bus routes
Distance between accessible stops		



# Your new Flinders Street tram stop

As part of the modernisation of Melbourne's tram network Yarra Trams and Public Transport Victoria (PTV) is constructing a new accessible tram stop on Flinders Street between Russell and Exhibition Streets.

## Why is the new platform being installed?

Flinders Street is one of the busiest tram corridors and a key route for passengers travelling to major events in the sport and entertainment precinct. Three tram routes operate along Flinders Street. Route 70 and 75 link the eastern suburbs with Docklands and the number 35 service for the City Circle route.

Existing safety zone stop six (6) at Russell Street and stop seven (7) at Exhibition Street experience significant usage each weekday.

The new stop will complete accessibility upgrades for this section of the network with all stops providing level access between Spring Street and Victoria Harbour.

### The upgraded level access platform stop will improve the passenger experience:

- > easier and safer access to trams
- > increased protection from road traffic
- > real-time passenger information
- > improved passenger amenity including shelters, seating and lighting.



yarra trams

PUBLIC  
TRANSPORT  
VICTORIA **PTV**

