

Plan

# Electric Line Clearance Management Plan By Yarra Trams for the Period from 1/07/2026 to 30/06/2027

Doc. No.: IN-016-PL-0001

Version: 5

Date 16/06/2026





## Table of Contents:

REFERENCE TABLE .....	4
DEFINITIONS/GLOSSARY.....	9
1 CONTEXT.....	10
2 OBJECTIVES.....	10
3 ACCOUNTABILITIES & ROLES.....	11
4 KPI PERFORMANCE MEASURES.....	11
5 LOCATION OF AREAS OF VEGETATION.....	11
5.1 Outsourced Functions .....	12
6 LONG-TERM RISK MANAGEMENT STRATEGIES .....	13
7 ROLES AND RESPONSIBILITIES.....	14
7.1 Roles, responsibilities and contact information .....	14
7.2 Organisational Structure .....	16
7.3 Responsibilities of other parties.....	16
8 VEGETATION MANAGEMENT OPTIONS .....	17
8.1 Factors influencing vegetation management options .....	17
8.1.1 Type of species .....	17
8.1.2 Tree health .....	17
8.1.3 Trees of significance .....	17
8.1.4 Fauna .....	18
8.1.5 Number of trees .....	18
8.1.6 Access .....	18
8.2 Inspections .....	18
8.3 Liaise and negotiate with councils or property owners .....	19
8.4 Reporting and auditing.....	19
8.5 Methods for maintaining clearance space.....	19
8.5.1 Length of period between each pruning or clearing of trees .....	20
8.5.2 Reactive tree works.....	21
8.5.3 Methods to prevent excess pruning or clearing of vegetation.....	21
8.5.4 Cutting or removal of trees .....	21
8.5.5 Exceptions .....	22
8.5.6 Hazard trees .....	22



8.6 Mulching and recycling of wood off-cuts..... 22

8.7 Qualification, proficiency of persons undertaking the trees inspections – audit..... 22

8.8 Qualification, proficiency and experience of persons pruning trees ..... 23

8.9 Skills matrix..... 25

9 NOTIFICATION, CONSULTATION AND NEGOTIATION WITH AFFECTED PERSONS ..... 29

9.1 Planned works ..... 29

9.2 Urgent works ..... 29

9.3 Restrictions on urgent works ..... 30

10 DISPUTE RESOLUTION ..... 30

11 PERFORMANCE EVALUATION ..... 31

APPENDICIES..... 32

Appendix 1 - Areas covered by this Electric Line Clearance Management Plan..... 32

Appendix 2 - Notice to Owner / Occupier ..... 35

Appendix 3 - Notice to Council..... 37

Appendix 4 - Notice for urgent pruning ..... 39

Appendix 5 - Audit Proforma ..... 40

Appendix 6 - Network map ..... 42

Appendix 7 - Non-Declared Areas ..... 43

Appendix 8 - Electrical Regulations graph 1..... 44

Appendix 9 - Electrical Regulations graph 2..... 45

Appendix 10 - Details of affected Councils ..... 46

RELATED LEGISLATION & DOCUMENTS ..... 47

DOCUMENT VERSION CONTROL ..... 47



## REFERENCE TABLE

Regulation	Requirements	Plan Reference
<b>Electricity Safety (Electric Line Clearance) Interim Regulations 2025</b>		
9 (2)	A responsible person that is not a major electricity company, before 31 March in each year, must prepare a management plan relating to compliance with the Code for the next financial year.	Objectives
9 (4)(a)	The name, address and telephone number of the responsible person	Roles and responsibilities
9 (4)(b)	The name, position, address and telephone number of the individual who is responsible for the preparation of the management plan.	Roles and responsibilities
9 (4)(c)	Name, position, address and telephone number of the persons who are responsible for carrying out the management plan	Roles and responsibilities
9 (4)(d)	The telephone number of a person who can be contacted in an emergency that requires clearance of an electric line that the responsible person is required to keep clear of trees.	Roles and responsibilities
9 (4)(e)	The objectives of the management plan.	Objectives
9 (4)(f)	The land to which the management plan applies (as indicated on a map)	Appendix 1 - Areas covered by this Electric Line Clearance Management Plan & Appendix 6 - Network map
9 (4)(g)	Any hazardous bushfire risk areas and low bushfire risk areas in the land referred to in paragraph (f) (as indicated on the map);	Context
9 (4)(h)	Each area that the responsible person knows contains a tree that the responsible person may need to cut or remove to ensure compliance with the Code, and that is: <ul style="list-style-type: none"> <li>(i) indigenous to Victoria; or</li> <li>(ii) listed in a planning scheme to be of ecological, historical or aesthetic significance; or</li> <li>(iii) a tree of cultural or environmental significance;</li> </ul>	Trees of significance
9 (4)(i)	The means which the responsible person will use to identify a tree of a kind specified in paragraph (h)(i), (ii) or (iii);	Type of species Inspections and Qualification, proficiency of persons undertaking



Regulation	Requirements	Plan Reference
	<b>Electricity Safety (Electric Line Clearance) Interim Regulations 2025</b>	
		the trees inspections – audit
9 (4)(j)	The management procedures that the responsible person will adopt to ensure compliance with the Code, which— (i) must include details of the methods to be adopted for managing trees and maintaining a minimum clearance space as required by the Code; and (ii) for the purposes of determining a minimum clearance space in accordance with Division 1 of Part 3 of the Code— (A) must specify the method for determining an additional distance that allows for conductor sag and sway; and (B) may provide for different additional distances to be determined for different parts of an electric line span;	Factors influencing vegetation management options
9 (4)(k)	The procedures to be adopted if it is not practicable to comply with the requirements of AS 4373 while cutting a tree in accordance with the Code;	Long-term risk management strategies
9 (4)(l)	A description of each alternative compliance mechanism in respect of which the responsible person has applied or proposes to apply for approval under clause 31 of the code;	Long-term risk management strategies
9 (4)(m)	The details of each approval for an alternative compliance mechanism that— (i) the responsible person holds; and (ii) is in effect;	Long-term risk management strategies
9 (4)(n)	A description of the measures that must be used to assess the performance of the responsible person under the management plan;	Long-term risk management strategies
9 (4)(o)	Details of the audit processes that must be used to determine the responsible person's compliance with the Code;	Long-term risk management strategies
9 (4)(p)	The qualifications and experience that the responsible person must require of the persons who are to carry out the inspection, cutting or removal of trees in accordance with the Code and the Electricity Safety (General) Regulations 2019;	Inspections and Qualification, proficiency of persons undertaking the trees inspections – audit



Regulation	Requirements	Plan Reference
<b>Electricity Safety (Electric Line Clearance) Interim Regulations 2025</b>		
9 (4)(q)	Notification and consultation procedures, including the form of the notice to be given in accordance with Division 3 of Part 2 of the Code;	Notification, consultation and negotiation with affected persons
9 (4)(r)	A procedure for the independent resolution of disputes relating to electric line clearance;	Dispute Resolution
9 (4)(s)	If Energy Safe Victoria has granted an exemption under regulation 11 relating to a requirement of the Code, details of the exemption or a copy of the exemption.	Long-term risk management strategies
10 (2)	The responsible person must provide a copy of the management plan to Energy Safe Victoria within 14 days after a written request from Energy Safe Victoria or such longer period as specified by Energy Safe Victoria in the written request.	Long-term risk management strategies
10 (3)	The responsible person, if requested in writing to do so by Energy Safe Victoria, must provide further information or material in respect of the management plan within 14 days after the written request or such longer period as specified by Energy Safe Victoria in the written request.	Long-term risk management strategies
10 (4)	The responsible person must amend the management plan if instructed to do so in writing by Energy Safe Victoria within 14 days after the written instruction or such longer period as specified by Energy Safe Victoria in the written instruction.	Long-term risk management strategies
10 (5)	The responsible person must not contravene a requirement of the management plan if the management plan is approved by Energy Safe Victoria.	Long-term risk management strategies
10 (6)	The responsible person must ensure that a copy of the current management plan is published on the responsible person's Internet site.	Long-term risk management strategies



Schedule 1 Part 2	Schedule 1- Code of practice for Electric Line Clearance	Plan Reference
Clause 4 (Schedule 1 Part 2)	Exception to minimum clearance space for structural branches around insulated low voltage electric lines	Cutting or removal of trees
Clause 5 (Schedule 1 Part 2)	Exception to minimum clearance space for small branches around insulated low voltage electric lines	Cutting or removal of trees
Clause 6 (Schedule 1 Part 2)	Exception to minimum clearance space for small branches growing under uninsulated low voltage electric lines in low bushfire risk areas	Cutting or removal of trees
Clause 7 (Schedule 1 Part 2)	Exception to minimum clearance space for structural branches around uninsulated low voltage electric lines in low bushfire risk areas	Cutting or removal of trees
Clause 9 (Schedule 1 Part 2)	Responsible person may cut or remove hazard trees	Hazard trees
Clause 11 (Schedule 1 Part 2)	Cutting or removal of indigenous or significant trees must be minimised e.g. <ul style="list-style-type: none"><li>• trees that are indigenous to Victoria;</li><li>• trees listed in a planning scheme to be of ecological, historical or aesthetic significance;</li><li>• trees of cultural or environmental significance.</li></ul>	Trees of significance
Clause 12 (Schedule 1 Part 2)	Cutting or removing habitat for threatened fauna.	Trees of significance
Clause 13 (Schedule 1 Part 2)	The responsible person must not commence cutting or removal of the tree on a day that is earlier than the first day that is specified, or before the first day of the period that is specified, in the notice under clause 16(6) or 17(4)(b)	Notification, Consultation And Negotiation With Affected Persons
Clause 14 (Schedule 1 Part 2)	The responsible person must not cut a tree further than one metre from the minimum clearance space for an electric line span	Notification, Consultation And Negotiation With Affected Persons



Schedule 1 Part 2	Schedule 1- Code of practice for Electric Line Clearance	Plan Reference
Clause 15 (Schedule 1 Part 2)	The responsible person must not remove the tree unless— (a) the tree has fallen or has become damaged and is to be removed to keep the minimum clearance space for an electric line span free of trees; or (b) a suitably qualified arborist has— (i) assessed the tree having regard to foreseeable local conditions; and (ii) advised the responsible person that the tree is likely to imminently fall onto or otherwise come into contact with an electric line.	Methods for Maintaining Clearance Space
Clause 16 (Schedule 1 Part 2)	Responsible person must provide notification before cutting or removing certain trees.	Notification, consultation and negotiation with affected persons
Clause 17 (Schedule 1 Part 2)	Responsible person must publish notice before cutting or removing certain trees	Notification, consultation and negotiation with affected persons
Clause 18 (Schedule 1 Part 2)	Responsible person must consult with the occupier or owner of private property before cutting or removing certain trees.	Notification, consultation and negotiation with affected persons
Clause 19 (Schedule 1 Part 2)	Notification and record keeping requirements for urgent cutting or removal.	Urgent works



## DEFINITIONS/GLOSSARY

Term	Definition
<b>Arborist</b>	See 'Suitably qualified arborist' in these definitions
<b>So far as practicable/As far as practicable</b>	Which is, or was at a particular time, reasonably able to be done to ensure health and safety, taking into account and weighing up all relevant matters
<b>Code</b>	Code of Practice for Electric Line Clearance as defined in the Schedule of the Electricity Safety (Electric Line Clearance) Interim Regulations 2025.
<b>Conductor</b>	Overhead powerline.
<b>Declared area</b>	The area where vegetation management around powerlines is the responsibility of YT
<b>DTP</b>	Department of Transport and Planning
<b>DEECA</b>	Department of Energy, Environment and Climate Action
<b>ELC</b>	Electric Line Clearance
<b>ESV</b>	Energy Safe Victoria
<b>HV</b>	High voltage (22,000volts – 66,000 volts)
<b>LBRA</b>	Low Bushfire Risk Area - An area that a fire control authority has assigned a fire hazard rating of "low" under section 80 of the Act*; or an urban area.
<b>LV</b>	Low voltage (Anything less than 1,000 volts)
<b>Regulations</b>	Electricity Safety (Electric Line Clearance) Interim Regulations 2025.
<b>Suitably qualified Arborist</b>	A Suitably qualified arborist means an arborist who has— (a) the qualification of National Certificate III in Arboriculture including the "Perform a ground-based tree defect evaluation" unit of competency, or an equivalent qualification; and (b) at least 3 years of field experience in assessing trees;
<b>The Act</b>	Electricity Safety Act 1998.
<b>The Plan</b>	Yarra Trams Electric Line Clearance Management Plan
<b>TreeMA</b>	Tree Management Agreements
<b>VMC</b>	Vegetation Management Company: 2025-26 Eastern Tree Services (ETS)



## 1 CONTEXT

This Plan applies to all Yarra Trams employees and Contractors for the financial year from 1/7/2026 to 30/06/2027.

This ELCMP applies to the Melbourne metropolitan streets on which tram services operate or where overhead feeder lines to those services are installed. The list of these streets is included in Appendix 1 - Areas covered by this Electric Line Clearance Management Plan, and a Map of Yarra Trams Electrical Lines is shown in Appendix 6 – Network map and Appendix 7 – Non-Declared Areas.

Graphs 1 and 2 of ELC regulations are applicable to Yarra Trams.

**Note:** Yarra Trams only operate in metropolitan Melbourne, and the entire area is classified as a Low Bushfire Risk Area (LBRA). The network is to remain in the LBRA classification for the foreseeable future; however, it will be reviewed annually.

## 2 OBJECTIVES

This Electric Line Clearance Management Plan (ELCMP) has been prepared with the following objectives:

- To comply with the Electricity Safety (Electric Line Clearance) Interim Regulations 2025
- To comply with 'Code of Practice for Electric Line Clearance'
- To comply with the 'Yellow Book' Yarra Trams Electrical Infrastructure Safety Rules VERSION 3.0 PUBLISHED OCTOBER 2021 IN-002-ST-0002
- To comply with the 'Orange Book' Victorian Traction Industry Electrical Safety Rules 2019.
- To minimise the potential for bush or grass fire starts.
- To ensure that all works are carried out within the bounds of Community satisfaction.
- To maintain a safe environment for the passengers and general public.
- To provide a safe workplace for employees and contractors.
- To ensure the continuity of tram services.
- To ensure the protection of sites of biological significance.
- To implement sustainable tree pruning practices that preserve the health and aesthetic value of the trees for the enjoyment of future generations without compromising the safety of employees or the general public.
- This ELCMP is reviewed annually on or before the 01 April.
- To ensure that ELCMP be made available to the public at the Yarra Trams Head Office reception level 3/555 Bourke St Melbourne and via the Yarra Trams website: <https://yarratrams.com.au/standards/> by the 1<sup>st</sup> of July.
- The ELCMP document is managed on the Yarra Trams CDMS (Central Document Management System) in line with our document management methodology. Once the current document is approved and published, the superseded version will be archived by the CDMS. Copies will be made available upon request.



### 3 ACCOUNTABILITIES & ROLES

Accountability	Role
Users	All Yarra Trams employees and Contractors
Document author	Team Manager, Network Facilities
Document authoriser	Director Infrastructure
Reference group	Manager, Power and Overhead

### 4 KPI PERFORMANCE MEASURES

- Safety and Risk Reduction: Tree clearance requirements to be reduced.
- Tree faults statistics review: Records to be retained in Yarra Trams database.
- Vegetation contractors to maintain mandatory training accreditation for Yarra Trams access works.
- Compliance: Energy Safety Victoria acceptance of the Plan.
- Stakeholder satisfaction: Decrease in the number of customer complaints received for overgrown vegetation in relation to the electrical line clearance.
- The purpose of the ELCMP is to outline the Yarra Trams approach to deliver its policy, procedures and compliance measures for the control of vegetation in the vicinity of Yarra Trams electrical assets in accordance with applicable regulations and standards.
- This Plan specifically describes the vegetation management activities for the operating year 1 July to 30 June; however, the Plan also reflects Yarra Trams long-term approach to the electric line clearance for the life of the franchise.

### 5 LOCATION OF AREAS OF VEGETATION

Vegetation Management Contractor (VCM) is the responsible person for carrying out vegetation management for Yarra Trams. VMC identifies the location of areas of vegetation that may need to be pruned or cleared to ensure compliance with the Code through the programme of;

- Surveys of vegetation growth near the tram powerlines.
- Reports from asset inspections.
- Reports from the tram drivers or the general public.

Furthermore, VMC will also identify and update the database which is maintained by VMC with;

- Information on indigenous remnant vegetation.
- Trees and vegetation, which are listed in a planning scheme to be of ecological, historical or aesthetic significance.
- Trees and vegetation, which are of cultural or environmental significance.

VMC will create and maintain an electronic asset database and will review and update it at least annually.

Registers to be checked include:

- Overall vegetation/tree population information;
  - VMC assessment and cutting records
  - Responsible vegetation mapping or survey data
  - Responsible streetscape or roads management plans



- Native vegetation;
  - National Vegetation information System (NVIS)  
[National Vegetation Information System \(NVIS\) - DCCEEW](#)
  - Department of Energy, Environment and Climate Action (DEECA)  
[Department of Energy, Environment and Climate Action \(deeca.vic.gov.au\)](#)
- Planning Scheme lists;
  - VMC's planning schemes and overlays
  - Department of Transport and Planning  
<https://www.planning.vic.gov.au/schemes-and-amendments/browse-planning-schemes>
- Trees of Cultural or environment significance;
  - Victorian Heritage Register  
<https://heritagecouncil.vic.gov.au>
  - Victorian Aboriginal Heritage Register  
<https://www.aboriginalvictoria.vic.gov.au/victorian-aboriginal-heritage-register>
  - The Threatened Species Advisory Lists is maintained by DEECA which can be accessed using the following link. It contains the list of vertebrate animals, invertebrate animals, vascular plants, non-vascular plants, and fungi and lichens. The PDF list can be accessed on the following list. <http://www.environment.vic.gov.au/conserving-threatened-species/threatened-list>

Within Yarra Trams document management system an annual update of the ELCMP is triggered, which includes a specific task for VMC to ensure that the data on these locations is maintained annually.

Yarra Trams has a small section of lines in a non-declared area on Plenty Road, Bundoora. Trams are running in median of Plenty Rd, which is a VicRoads major road and therefore the trees are the accountability of VicRoads, transferred onto Yarra Trams. Refer to Appendix 7 – Non-declared Areas.

## 5.1 Outsourced Functions

Yarra Trams has outsourced the vegetation management responsibilities to ensure electric line clearance is maintained. For the purpose of this Plan the Vegetation Management Contractor is known as VMC.

Under this outsourcing agreement, the incumbent VMC will liaise with the councils and third parties to identify any trees contained with the planning schemes and are deemed to be of ecological, historical or aesthetically significant to add to the VMC database. Information will be gathered by sending written requests to councils asking them to identify trees of significance and to address problematic trees on the network that may interfere with electrical line clearance. This process is conducted as part of the normal vegetation inspections and clearance and reported as identified.

Responsibilities of the VMC:

- Inspections identifying all trees in the vicinity of the electrical assets on the Yarra Trams electrical network.
- Compiling the database maintained by the incumbent and provided to Yarra Trams. Database to include native and heritage trees and the location of trees of significance.
- Assessing each tree on the pruning compliance against the regulations.
- Negotiations with Councils advising on the need to prune and monitoring compliance.
- Pruning of all private Trees and Yarra Trams trees according to the regulations.



- Vegetation maintained in accordance with AS4373.

Note: Extent of the Network is detailed in the Appendix 6 – Network map and Appendix 7 – Non-Declared Areas, which clearly identify the network pertaining to the areas covered by this ELCMP.

## 6 LONG-TERM RISK MANAGEMENT STRATEGIES

Yarra Trams has implemented the following long-term risk management strategies to minimise risks so far as reasonably practicable related to vegetation growing around the power lines;

- Applied sustainable pruning practices that balances the need for line clearance and safety on the network with broader, long-term impacts on vegetation while maintaining compliance with the electricity Safety (Electric Line Clearance) regulations.
- Maintains a suitable management structure that can effectively and efficiently deliver sustainable tree management.
- Manages through clear process and procedure documentation that VMC and any Yarra Trams personnel checks for changes to the records on tree species, their cultural requirements, tree age, local and regional ecological values, their health and structural integrity, specific characteristics (such as the growth rate and response to pruning), and their present or potential aesthetic and/or heritage value via the available published registers.
- Established a set of key performance indicators (KPIs) to monitor performance and to ensure continual improvement.
- Consulted with local councils, the community and other relevant stakeholders on the most appropriate tree replacement strategies.
- Ensure all tree pruning activities are undertaken in accordance with AS 4373:2007 Pruning of Amenity Trees.
- **Note** that Yarra Trams has no areas located in High Bush Fire Risk Areas (HBRA).

Before 31 March in each year, Yarra Trams update the Annual Infrastructure Works Plan (AIWP) to ensure AIWP activities are captured to include the following;

- Preventative Maintenance Schedule in the Yarra Trams asset management system.
- Vegetation Management Program to safely create and maintain the required clearance around power lines in accordance with the requirements of the Code of Practices for Electric Line Clearance Part 3 – Minimum Clearance spaces.
- Management of procedures for standards and practices to be adopted and observed in tree cutting or removal in the vicinity of electric lines and the keeping of the whole or part of a tree clear of electric lines.
- Provide further information in respect of the ELCMP on request within 14 days or such longer period as specified by Energy Safe Victoria.
- Amend the ELCMP when instructed to do so by Energy Safe Victoria within 14 days or such longer period as specified by ESV.

The ELCMP document is reviewed annually to ensure the currency of the information contained in it.



## 7 ROLES AND RESPONSIBILITIES

### 7.1 Roles, responsibilities and contact information

Table 1 identifies persons responsible for vegetation management in relation to electric line clearance as required by section 9 (4) of the Electricity Safety (Electric Line Clearance) Interim Regulations 2025.

For the purpose of Section 84 of The Electricity Safety Act 1998, any person (other than a distribution company) that owns or operates an electric line is responsible for the keeping of the whole or any part of a tree clear of the electric line.

Table 1

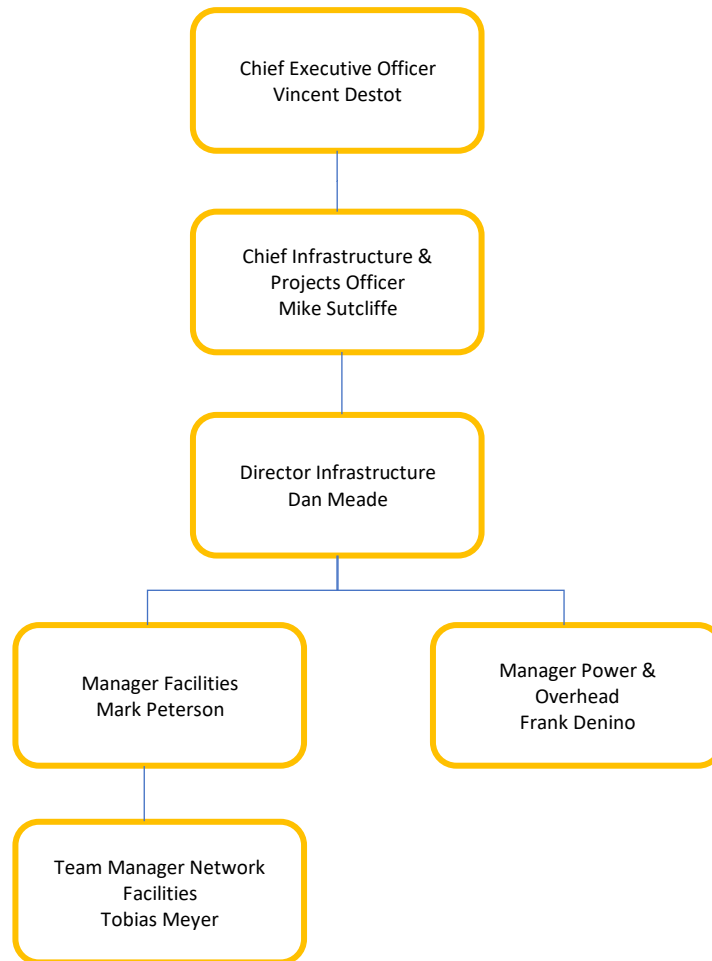
Responsibility	Information	
<b>Responsible person</b>	Name of Organisation	Yarra Journey Makers, trading as Yarra Trams
	Name:	Vincent Destot
	Position:	Chief Executive Officer
	Responsibilities	Overall responsibility of Yarra Trams
	Address:	Tram Hub, 3-555 Bourke St Melbourne PO Box 5231 Melbourne 3000
	Ph.:	03 9619 3200
<b>Person responsible for the preparation of the Plan</b>	Name:	Dan Meade
	Position:	Director, Infrastructure
	Responsibilities	The Director Infrastructure has overall responsibility for the implementation of this ELCMP. Specific responsibilities include but are not limited to; <ul style="list-style-type: none"> <li>• Ensure all works are undertaken in accordance with the requirements of the Franchise Agreement.</li> <li>• Ensure adequate planning of the works, particularly in the environmentally sensitive areas</li> <li>• Implementation of the Vegetation Management Plan, Fire Prevention Plan and other infrastructure maintenance plans</li> <li>• Liaise with Chief Safety Officer and Chief Corporate Affairs Officer on all environmental matters related to the vegetation management on the tram network</li> <li>• Ensure adequate regime of vegetation management inspections of the tram network</li> </ul>



Responsibility	Information	
	Responsibilities	<ul style="list-style-type: none"><li>• Ensure adequate regime of vegetation management inspections of the tram network</li><li>• Ensure all contractors and subcontractors are informed of the environmental management requirements prior to being engaged</li><li>• Investigate and report on environmental incidents</li><li>• Maintain complaints register.</li></ul>
	Address:	Tram Hub 3-555 Bourke St Melbourne and E-Gate, Footscray Road, West Melbourne, VIC 3003 PO Box 5231 Melbourne 3000
	Ph.:	03 9619 3200
<b>Persons responsible for carrying out the Plan</b>	Name:	Tobias Meyer
	Position(s):	Team Manager Network Facilities
	Responsibilities	Implement all ELCMP and VMP requirements related to vegetation affecting overhead line electrical equipment and ground-level vegetation management on the tram network.  Report on Yarra Trams vegetation management performance as required by the Franchise Agreement.
	Address:	E-Gate, Footscray Road, West Melbourne, VIC 3003 GPO Box 5231, Melbourne VIC 3001
	Ph.:	03 9619 3200
<b>Person to be contacted in emergency that requires clearance of an electric line</b>	Name:	Yarra Trams Power Operations Centre
	Emergency No:	T 03 9610 3394 / 3395 (24 hours availability)
<b>Responsible 3<sup>rd</sup> Parties</b>	Name:	Vegetation Management Contractor (VMC)
	Responsibilities	Carrying out Line Clearance activities including; Inspection/assessment Cutting/pruning/tree removal Notification etc.



## 7.2 Organisational Structure



## 7.3 Responsibilities of other parties

Distribution businesses, councils and owner/operator/installer of an electric line are responsible for keeping trees clear of an electric line (Electricity Safety Act 1998).

Yarra Trams Electrical Overhead assets are contained along the tram network and some road easements.

Trees and other vegetation around Tram powerlines are often located within areas under the control of local councils and other organisations. They are, as the owners or occupiers of the land under Part 8 of the Electricity Safety Act, responsible for maintaining the clearance space from the Tram feeder and trolley powerlines on road reserves.

Yarra Trams is committed to working with these organisations to deliver the best possible outcome for all involved parties. We will proactively liaise with other responsible parties to establish the protocol for vegetation management in each of the local areas.

The protocols include, as a minimum;

- Maps or plans showing the boundaries, and the parties responsible for tree pruning within those boundaries.
- The frequency of inspections for overhead clearance.
- The minimum training and competency requirements in accordance with the relevant rules.



- The safe approach distances for Yarra Trams electrical infrastructure with potential tools and equipment used.
- Notification and communication protocols for pruning schedules and works.
- Tree removal arrangements.
- Long-term strategies for preserving the aesthetic and/or heritage value of the trees.

## 8 VEGETATION MANAGEMENT OPTIONS

### 8.1 Factors influencing vegetation management options

Many factors influence the vegetation management options selected for a particular location, and these are briefly outlined below.

There are no trees of significance within Yarra Trams controlled corridors however, trees in adjacent private properties may have a significance rating. This will be confirmed in the inspection process and recorded in the database to ensure the tree is pruned accordingly.

Councils undertake their own inspections to assess and map all councils tree assets associated with power lines to determine if any trees are of cultural or environmental significance.

Yarra trams will ensure that VMC consults with the relevant city councils and obtain a list of trees that are of cultural or environmental significance to include in the annual inspection.

Furthermore, Yarra Trams does not have locations where the distance between the poles is greater than 45m. Therefore, determination for additional allowance for sag is not a requirement.

#### 8.1.1 Type of species

Certain tree species are more likely to have an aesthetic appearance after pruning, for example, *Lophostemon confertus* (Brush Box), because of its broad domed natural canopy. Other species, for example, some varieties of *Eucalyptus*, generally have a straight or erect type branching habit and do not prune well.

#### 8.1.2 Tree health

The health of a particular tree or a group of trees is another deciding factor in selecting the appropriate trimming option.

If the tree is considered unhealthy and a potential hazard, Yarra Trams will consult with the owner of the private property regarding the removal of such trees as per Clause 9 (Schedule 1 of the Regulations). The required notification periods of a minimum 14 days and maximum 60 days to undertake the works will be adhered to unless it falls under 'Urgent Works' where safety is at risk.

Notification will be sent out based on the work schedule of VMC relevant to the area, allowing adherence to the timeframe noted above.

If the hazardous tree is not moved within the 60-day timeframe, VMC will enact the dispute resolution process and reschedule with the property owner.

#### 8.1.3 Trees of significance

There are no trees of significance within Yarra Trams controlled corridors including;

- Indigenous trees
- Trees which are listed in a planning scheme to be of ecological, historical or aesthetic significance
- A tree of cultural or environmental significance

However, if VMC identifies any trees of significance outside Yarra Trams controlled corridors, VMC will take necessary steps to notify the relevant authority.



VMC is not to cut or remove a tree that is the habitat for threatened fauna during the breeding season for the threatened fauna unless:

- It is necessary to cut or remove the tree to make an unsafe situation safe.
- It is not practicable to undertake cutting or removal of the tree outside the breeding season, VMC must translocate the fauna before undertaking the cutting or removal if it is practicable to do so.

Trees will be assessed as to the ecological value, and the audit reports forwarded to the Council. Private trees and those of the responsibility of VMC will be assessed, and decisions made between VMC and the Arborist.

## 8.1.4 Fauna

VMC is responsible for the identification of threatened vertebrate/invertebrate fauna in Victoria.

VMC makes aware and provides access to the Threatened Species Advisory lists which is on <http://www.environment.vic.gov.au/conserving-threatened-species/threatened-list> to its Scopers/workers.

This list (PDF) which is maintained by Victorian Department of Energy, Environment and Climate Action (DEECA) contains threatened vertebrate animals, invertebrate animals, vascular plants, non-vascular plants, and fungi and lichens.

VMC is to take required steps to remove the minimum amount of vegetation to comply with the Electrical Line Clearing Regulations and in line with Yarra Trams Environmental Policy.

Where Scopers/Workers have concerns, these will be raised with VMC management and works shall cease until an investigation will be conducted by VMC and Yarra Trams.

## 8.1.5 Number of trees

The total number of trees at a particular location may be a factor in deciding whether removal or replacement can be considered as options. The removal or replacement of more than one tree, even if they are in poor health, may adversely affect the amenity of a particular location. An assessment of the amenity value of the trees marked for removal or replacement will be carried out, in consultation with the local Council and the community, prior to a final option being selected. This is unless it is necessary to cut or remove the tree(s) to make an unsafe situation safe

## 8.1.6 Access

Access to trees located on private land, such as urban backyards, can be challenging, and this, combined with other factors such as safety and network reliability, influences the selection of a preferred vegetation management option.

## 8.2 Inspections

The Yarra Trams VMC will undertake a complete survey of all trees on the network that may impact the electrical clearance to the overhead network and other power assets such as SCADA and feeder cables.

Inspectors are to have a Cert 2 in ESI Powerline Management qualification at a minimum and be able to assess vegetation and recommend control measures in an ESI environment. (This complies with the assessor /scoper stream as part of the Cert 2 ESI for scoping and recognise plants).

Inspections to be undertaken in March/April every year, resulting in detailed reports by Council Area on any trees in need of attention.

Additional summer preparedness survey to be undertaken in November /December highlighting trees that may require urgent pruning that has not been pruned yet in their program.

Both inspection tasks will be scheduled in Yarra Trams asset management system, creating a work order to ensure compliance.



The VMC shall prepare a data collection based on the survey information, inspection data and work completed.

The inspection results conducted by Council Area are to be submitted to Yarra Trams within one month of completion, together with a proposed schedule of pruning.

Trees that require pruning that is the responsibility of Yarra Trams will be programmed to be completed within two months of the submission to Yarra Trams of the inspection.

Advisory letters to be sent to the relevant councils within one month of the completion of the inspections.

### 8.3 Liaise and negotiate with councils or property owners

Various City Councils are responsible for maintaining the clearance space from Yarra Trams feeder and electric trolley lines on road reserves.

The VMC will work with these organisations to identify the best solution to locate and rectify areas of non-compliance with the clearance requirements. They will provide a list of vegetation infringement locations to the relevant Council where the Council is responsible for maintaining the clearance space under the Act.

Yarra Trams requires to be involved in discussions with the councils and will at least once per year participate in a meeting arrange by the VMC to discuss the council's pruning programs.

### 8.4 Reporting and auditing

The VMC is to submit a monthly report to Yarra Trams on work undertaken on that particular month. The following information is identified in this report as a measure of effectiveness/performance of the ELCMP, but not limited to;

- The number of trees surveyed/inspected and found as in breach of the code.
- The number of trees pruned.
- The number of incidents of tree encroaching the electric line that necessitate the requirement of communicating with the relevant authorities and property's owners.
- The location including route, street location & number where trees require pruning.
- Geographical representation of tree infringements including other responsible owner trees.
- Electronic data to be audited to ensure updated information is kept.

Regular internal audits are conducted by Yarra Trams to ensure that all requirements outlined in this ELCMP are being met and any non-conformity with the Code is identified.

A detailed audit schedule incorporating Yarra Tram's corporate auditing regime on safety and compliance will be prepared and published annually. Audits will be carried out within 1 week to 3 months of works being carried out. Any non-compliance issues uncovered as a result of these audits are raised with VCM to ensure they achieve compliance. Also refer to Section 11 – Performance Evaluation.

### 8.5 Methods for maintaining clearance space

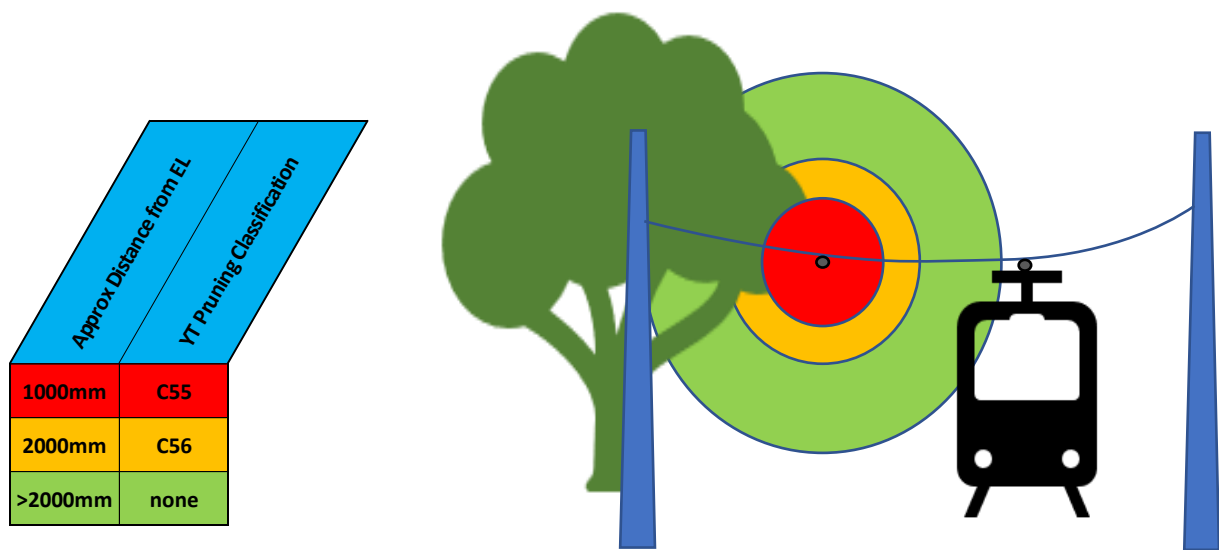
At all times VMC is to maintain clearances in accordance with the following sections of the Regulations;

- Clearance Responsibilities - Schedule 1 - Part 2
- Minimum Clearance Spaces - Schedule 1 - Part 3
- Insulated Electric Lines in All Areas– Schedule 2
- Uninsulated Low Voltage Electric Line in Low Bushfire Risk Area - Schedule 2

Furthermore, Yarra Trams has also developed its own classification system categorising trees for the pruning. In this system, the vegetation which needs pruning is classified in to two 'codes', 55 and 56. Both these classifications are identified as non-compliant with code 55 having higher urgency to be rectified.

Yarra Trams objective is to ensure that vegetation is kept clear of the electrical assets as per the Act and Regulations, providing, where practical and possible, minimum clearance space of 2 meters after the completion of the program.

- Code 55 - Vegetation that is or has the potential to touch the electrical assets. These trees are to be given high priority for pruning, and works will be scheduled accordingly.
- Code 56 -Vegetation that has been identified as likely to enter the clearance space within the annual inspection cycle. These trees will be earmarked for pruning if and when the necessity occurs to work in the proximity of these trees (100m on both sides).



The preceding graph illustrates how the Codes apply to the YT tram network.

Yearly meetings or data exchanges to be coordinated with each Council on conclusion of the annual inspection to ensure that trees nominated by Yarra Trams are included in the councils pruning program.

In regard to undertaking any maintenance on the trees, works shall be undertaken in accordance with Table 6 of the Safe Approach Distances of the Yellow Book (Electrical Infrastructure Safety Rules (Yellow Book) V 3.0 PUBLISHED October 2021

### 8.5.1 Length of period between each pruning or clearing of trees

The length of the period between each pruning or vegetation clearing varies for each location and depends on the following factors;

- The species type
- The regrowth rates
- Climate change
- Seasonal weather patterns

It is Yarra Trams intention to maintain, as a minimum, a three-yearly pruning cycling.



## 8.5.2 Reactive tree works

Reactive tree works is undertaken following an incident, a storm event, or at the request of a resident, local Council or other relevant organisation. Reactive works are also programmed in response to audits.

## 8.5.3 Methods to prevent excess pruning or clearing of vegetation

All tree work is performed to the highest arboriculture standard to achieve a safe, healthy, well-balanced and aesthetically pleasing population of trees along the Tram network. To this extent, all tree pruning activities are to be undertaken as far as practicable in accordance with AS 4373:2007 Pruning of Amenity Trees. In addition, the following alternative measures may also be considered;

- The replacement of trees with more appropriate species.
- Not planting trees where there is insufficient space.
- Taller poles, or alternative pole locations.
- Underground cabling, and powerline realignment.

## 8.5.4 Cutting or removal of trees

When cutting a tree, VMC must as far as practicable cut the tree in accordance with AS 4373 (2007). If compliance with AS 4373 cannot be achieved, it will be referred to a Senior Arborist for further inspection and advice.

VMC is to ensure that all trees that need to be pruned or removed will be done so in compliance with the Electricity Safety (Electric Line Clearance) Interim Regulations 2025 Schedule 2 - Graph 2 – Uninsulated Low Voltage Electric Line in Low Bushfire Risk Area (Appendix 9).

All pruning will be undertaken by a suitably qualified person(s) as outlined below in chapter 'Qualification, Proficiency and Experience of Persons Pruning Trees'. Prior to cutting a hazardous tree, it will be assessed by a qualified arborist.

VMC, when cutting a tree of a kind, as far as practicable will not cut the tree more than is necessary to make an unsafe situation safe.

VMC shall not remove a tree unless it is necessary to remove the tree to make an unsafe situation safe unless a suitably qualified arborist has inspected the tree and advised VMC that cutting the tree would make the tree unhealthy or unviable.

VMC shall not cut or remove a tree that is recorded as being a native tree, trees listed in a planning scheme to be of ecological, historical or aesthetic significance and or trees of cultural or environmental significance.

The list of trees that are recorded as being a native trees, trees listed in a planning scheme to be of ecological, historical or aesthetic significance and or trees of cultural or environmental significance are to be recorded in Yarra Trams database/management system. The pruning schedule to be checked against this list prior to any works proceeding.

If VMC is unable to comply with AS4373, the VMC is to advise the Yarra Trams representative and request an exception to comply with AS4373, explaining in detail how the VMC plans to achieve ELC compliance. With the request a detailed works plan on working around the Yarra Trams electrical infrastructure assets must be submitted. In this instance, an isolation permit may be required, and the Yarra Trams representative shall arrange such permit.

Works are to be carried out in accordance with the Electricity Safety (Electric Line Clearance) Interim Regulations 2025 - Graph 1 – Uninsulated Low Voltage Electric Line in Low Bushfire Risk Area (Appendix 8).

The VMC to provide a schedule of works on Private and Yarra Trams Trees to ensure pruning completed within two months of submission of the program.



## 8.5.5 Exceptions

Yarra Trams will not seek exceptions as defined in Part 2 Section 11 of the Regulations titled Exceptions.

Furthermore, Yarra Trams will not pursue the following exceptions as defined in Schedules;

- Exception to minimum clearance space for structural branches around insulated low voltage electric lines – Clause 4 (Schedule 1).
- Exception to minimum clearance space for small branches around insulated low voltage electric lines – Clause 5 (Schedule 1).
- Exception to minimum clearance space for small branches around uninsulated low voltage electric lines in low bush fire areas - Clause 6 (Schedule 1).
- Exception to minimum clearance space for structural branches around uninsulated low voltage electric lines in low bush fire areas - Clause 7 (Schedule 1).

No data is being collated relating to exemptions.

## 8.5.6 Hazard trees

A hazard tree is a tree that has or is likely to fail and make contact with electric lines

The identification of a hazard tree where practical is made in accordance with YT 'Hazard Tree Management Task Card', which provides a simple description for all YT staff and VMC staff to initially classify hazardous trees or trees of interest. The final assessment on a hazardous tree is made by a suitably qualified arborist as defined in the code (see definitions section).

The assessment for hazardous trees includes health and structure, safe, useful life expectancy, environmental conditions, stability and regrowth.

If found to be hazardous, the tree will be removed by VMC.

Notification is to be given to Councils or residents of the need for urgent pruning or removal of the hazard tree (See appendices for the forms to be used).

Records to be maintained in the VMC databases for future reference.

Notifications on Hazard Trees by councils, residents or other third parties will be processed through the standard Yarra Trams notification process via the Passenger Feedback Line as published on the Yarra Trams website.

## 8.6 Mulching and recycling of wood off-cuts

Yarra Trams commitment to waste reduction, re-use and recycling is addressed in more detail in the Franchise Agreement related Vegetation Management Plan. Yarra Trams ensures that all pruning and vegetation clearing operations are accompanied by mulching and the recycling of wood off-cuts.

All private property owners are given the option of keeping some or all of the mulch generated from pruning trees on their land and, if they wish to retain the mulch, it will be deposited on their property in an environmentally responsible manner. Any unwanted mulch will either be re-used at the tram depot grounds and tram network reserves or taken to an appropriate green waste recycling facility.

## 8.7 Qualification, proficiency of persons undertaking the trees inspections – audit

Yarra Trams Electric Line Clearance contract with VMC stipulates that any contractor undertaking inspections around the electric line will have a Certificate II in ESI – Powerline Vegetation Control or an equivalent qualification and at least 3 years' experience in assessing trees.

As a minimum, the VMC will be required to comply with the skills matrix as detailed.



Yarra Trams requires experience, expertise, quality management, OH&S systems and environmental management systems of its contractors and internal staff to ensure they comply with its requirements.

Trees are assessed by suitably qualified arborists as defined in the code, during the assessment the trees are assessed for hazards which include health and structure, stability and growth. If a hazardous tree is found, the VMC will recommend to the relevant party and/or Council that the tree needs to be urgently pruned or removed.

If the tree is on private property, the owner will be consulted by the VMC and pruning or removal arranged.

## 8.8 Qualification, proficiency and experience of persons pruning trees

Authorised persons employed to prune trees or clear vegetation from overhead powerlines are required to hold appropriate qualifications in accordance with section 616 of Electricity Safety (General) Regulations 2019 and possess the experience to carry out such works on the Tram network

Training to include completion of the latest Yarra Trams Electrical Infrastructure Safety Rules and therein required training for Vegetation Management Contractors.

A qualified person requires to hold a current certificate specifying satisfactory completion of a training course in tree clearing approved by ESV.

All works to be carried out in accordance with AS4373:2007.

As a minimum, the following qualifications/licences are required to perform the tree works;

- All qualifications are to be undertaken at a Registered Training Organisation (RTO)
- All qualified persons undertaking the pruning of trees near overhead powerlines must hold a current certification in accordance with UET20319 Certificate II in ESI Power Line Vegetation Control.
- All staff will undergo 'toolbox' meetings to ensure awareness of AS 4373 and to ensure compliance Yarra Trams and VMC company safety policies.
- VMC must ensure that only suitably qualified and inducted personnel are engaged undertake works on behalf of Yarra Trams. The VMC shall provide quarterly update of all contracted personnel assigned to YT for review.
- Take 5 or site safety assessments to be undertaken prior to each job and recorded.
- The ESV requires that qualified persons undertake an annual refresher training at an RTO, that covers at a minimum;
  - Safety
  - Working in the vicinity of electrical apparatus
  - Approach to Electrical Apparatus in accordance with ESV rules
- Assessment on the condition of trees is to be carried out by an AQF Level 5 qualified Arborist.
- Tree maintenance or pruning works require AQF Level 3 qualification in Arboriculture.
- All personnel operating an Elevated Work Platform (EWP) must hold the appropriate accreditation and possess a current certificate.
- All personnel undertaking the pruning of trees near overhead powerlines must hold a current Level 1 First Aid Certificate, and all pruning crews must have at least one staff member with a Level 2 First Aid Certificate on-site at all times.
- All staff to be trained and certified in the use of the appropriate plant and equipment for each pruning activity.
- All plant and equipment to be in good working order with electrical equipment up to date 'test and tagged'.



- All plant and equipment maintenance records to be maintained and available on request to ensure appropriate plant and machinery is utilised to ensure the cutting carried out in accordance with AS 4373.
- Training Records to be maintained for subcontractors and in-house staff to ensure staff is aware of all regulations pertaining to ELC. VMC to provide training records and matrix to Yarra Trams on request.
- Individuals undertaking works for Yarra Trams detected during audits which are not suitably qualified as per the VMC contract will be advised to stop work, and the contractor's supervisor will be advised of the noncompliance. Currency of personnel training records of individuals involved in Yarra Trams works to be regularly verified in the meetings with the contractor and also during site inspections.
- All Yarra Trams induction requirements are undertaken and maintained through Thompson Bridge.
- All Yarra Trams inductions are to be conducted in accordance with the Yarra Trams Contractor Safety Management Guideline SS-018-GL-0001 for Tier 1 Contractors.
- Training records to include specific training and similar matrix as detailed in following pages:



### 8.9 Skills matrix

The following is the Yarra Trams Vegetation Skills and Training requirements.

This document shows all requirements for personnel working under Yarra Trams contracts. The requirements include induction, skills training, authorisations, competency assessments and health monitoring and reflect both contract requirements and VMC policy. The requirements are shown in table form with the task or work activity type in the columns. Grounds Maintenance and Litter Removal roles have no additional requirements and so are not shown separately.

Requirement	Skill Code	Refresher Period	Everyone	Chipper Operator	Ground Crew	EWP operator/Safety Observer	Climber/ Safety Observer	Scoper / Assessor	Herbicide	Herbicide – Restricted Chemicals	Cert III Arborist	EISR Worker	Gap Analysis
<b>Induction</b>													
ETS Induction	I001	Nil	✓	✓	✓	✓	✓	✓	✓	✓	✓	✓	
ETS Risk Assessment Training	T045	Nil	✓	✓	✓	✓	✓	✓	✓	✓	✓	✓	
ETS Handbook Acknowledgement	T112	Nil	✓	✓	✓	✓	✓	✓	✓	✓	✓	✓	
General Safety Induction (Blue/White card)	I006	Nil	✓	✓	✓	✓	✓	✓	✓	✓	✓	✓	
<b>Yarra Trams qualifications</b>													
Yarra Trams Induction	I029	Nil	✓	✓	✓	✓	✓	✓	✓	✓	✓	✓	
Manual Handling	T273	3 years			✓	✓	✓					✓	
Maintain Safety at an Incident Scene	PUA0HS002B	3 years			✓	✓	✓					✓	
Traffic Control Stop Slow Bat	RIIWH205D	3 years			✓	✓	✓					✓	
Traffic Implement Management Plan	RIIWH302D	3 years			✓	✓	✓					✓	
Apply ESI Safety Rules	UETDRRF01B	Nil			✓	✓	✓					✓	
First Aid in ESI Environment	UETDRRF10B	Annually	✓	✓	✓	✓	✓	✓	✓	✓	✓	✓	



# Electric Line Clearance Management Plan



Requirement	Skill Code	Refresher Period	Everyone	Chipper Operator	Ground Crew	EWP operator/Safety Observer	Climber/ Safety Observer	Scoper / Assessor	Herbicide	Herbicide – Restricted Chemicals	Cert III Arborist	EISR Worker	Gap Analysis
<b>Skills Training/Licenses</b>													
Driver’s license (car)	L004	Variable	✓	✓	✓	✓	✓	✓	✓	✓	✓	✓	
Driver’s license (truck) <b>Refer note below</b>	L005 L006 N002	Variable											
CPR	HLTAID001	Annually	✓	✓	✓	✓	✓	✓	✓	✓	✓	✓	
First Aid – Level 1	T017	3 years	✓	✓	✓	✓	✓		✓	✓	✓	✓	
Make Application for		3 years				✓							
Manual Handling (Non RTO)	T004	Nil	✓	✓	✓	✓	✓	✓	✓	✓	✓	✓	
Hearing Conservation (Non RTO)	T007	Nil		✓	✓	✓	✓	✓	✓	✓			
ESIR – Mandatory training requirements (same for all staff accessing the electrical network)			✓	✓	✓	✓	✓	✓	✓	✓	✓	✓	
Apply Access Procedures	UETDRRF09, UETDRRF01	3 years				✓							
Safe Approach Distances	T188	Annually			✓	✓	✓						
Chainsaw – Level 1	T006	3 years			✓	✓	✓						
Chainsaw – Level 2 (Fell small/large trees)	AHCARB202A	6 years			✓	✓							
Chipper operation <b>Refer Note 3</b>	FWPHAR2208, AHCMOM304	3 years			✓	✓	✓						
Apply Chemicals under supervision	AHCCHM201A	Nil			✓	✓	✓		✓				
Transport, Handle and Store Chemical	AHCCHM304	10 years								✓			
Agricultural Chemical Users Permit		10 years								✓			



Requirement	Skill Code	Refresher Period	Everyone	Chipper Operator	Ground Crew	EWP operator/Safety Observer	Climber/ Safety Observer	Scoper / Assessor	Herbicide	Herbicide – Restricted Chemicals	Cert III Arborist	EISR Worker	Gap Analysis
Control vegetation using pruning techniques	UETDRVC007, UETDRVC33	Nil				✓	✓						
Undertake release and rescue from a tree near live electrical apparatus	UETDRVC010, UETDRVC34						✓						
Recognise Plants	AHPCPM204, AHPCPM201					✓	✓	✓					
Assess trees for inspection	AHCARB312, AHCARB204, AHCARB322						✓						
Operate specialist equipment at ground level near live electrical apparatus	UETDRVC31A	Nil			✓								
Use climbing techniques to cut vegetation above ground near live electrical apparatus	UETDRVC006, UETDRVC21	N101	Nil				✓						
Assess vegetation & recommend control measures in an ESI environment	UETDRVC002, UETDRVC24	Nil						✓					
Control vegetation in the vicinity of live electrical apparatus from an EWP	UETDRVC004, UETDRVC25	B003	Nil			✓							
Licence to operate a boom-type elevating work platform (boom length 11 metres or more)	TLILIC2005	Nil				✓							
EWP High Risk License	L001	5 years				✓							
EWP Rescue	UETDRRF03B	Annually				✓							
EWP Escape	UETDRRF08B	Annually				✓							
Cert III in Horticulture (Arb) RTF	AHCARD30816	Nil						✓			✓		



Requirement	Skill Code	Refresher Period	Everyone	Chipper Operator	Ground Crew	EWP operator/Safety Observer	Climber/ Safety Observer	Scoper / Assessor	Herbicide	Herbicide – Restricted Chemicals	Cert III Arborist	EISR Worker	Gap Analysis
Cert II in ESI Powerline Veg Control	UET20319	Nil			✓	✓	✓	✓					
Pegasus Registration		50 years	✓	✓	✓	✓	✓	✓	✓	✓	✓	✓	
Pegasus ID		Variable	✓	✓	✓	✓	✓	✓	✓	✓	✓	✓	
<b>Health Monitoring</b>													
Hearing Test <i>Refer note below</i>	T005	2 years		✓	✓	✓	✓		✓	✓			
<b>Competency Assessment</b>													
Competency - Climber		Nil					✓						
Competency - EWP operator		Nil				✓							
Competency - Ground crew/cutter		Nil			✓								
Competency - Traffic Control		Nil											
Competency - Chipper operator		Nil		✓									
Competency - Power Pruner Use		Nil			✓								
Competency - Herbicide Use		Nil							✓	✓			

**Key**

✓ Required                      0 Optional

**Notes:**

- 1. Driver’s Licenses:** All personnel who drive a vehicle must have a car driver’s license as well as the relevant truck license i.e. minimum Medium Rigid (MR). A small number of trucks require a Heavy Rigid (HR) license.
- 2. Hearing Test:** only required for employees
- 3. Chipper training** must be against course code FWPHAR2206 rather than AHCMOM304



## 9 NOTIFICATION, CONSULTATION AND NEGOTIATION WITH AFFECTED PERSONS

### 9.1 Planned works

Before performing any pruning or tree removals, residents in the immediate vicinity are notified 14 days and not more than 60 days before the work commences. Notification will be in writing and sent directly to the owner/occupier.

The written notice includes details;

- Of pruning, to the occupier of the land on which the vegetation is to be pruned.
- Of clearing, to the owner and the occupier of the land on which the vegetation is to be cleared and any affected person.

Before commencing any pruning or clearing under the Code, Yarra Trams through VMC shall consult with the occupier of the land and any other affected person and take reasonable steps to negotiate;

- An agreement about the pruning to be undertaken, or a modification of the pruning to be undertaken or alternative methods for maintaining clearances, if the affected persons should object to the proposed pruning.

Yarra Trams through VMC takes reasonable steps to negotiate an agreement regarding;

- Methods for the disposal of debris resulting from the pruning or clearing operation.
- Arrangements for access to clearance spaces, and the use of chemicals.

Should the notified works be delayed past the 60 days, a new notification will be issued to the owner/occupier. VMC will monitor the notification time frames through a summary of the outstanding works and the time they were notified. This report serves to identify tree works with a minimum lead time of two weeks in order to facilitate renotification.

### 9.2 Urgent works

Typically trees that require an action of an urgent nature include;

- Hazard trees where there is an imminent risk of the tree falling and falling onto or contacting an electric line.
- Tree displaying unexpected regrowth that has entered the clearance space.
- Trees that have failed casing and as a result contact with the electric lines is imminent or has encroached the line clearance space.

For Emergency works, written Appendix 4 - Notice for urgent pruning is to be given as soon as practical after completing the pruning or removal. The VMC will provide the notice on the day of the works or mail it within 5 business days of the work being undertaken.

Details to include;

- Where and when the cutting or removal was undertaken.
- Why the cutting or removal was required.
- The date of the last inspection of the electrical assets in relation to which the cutting or removal was required before it was identified that the urgent cutting /removal was required.



All details to be recorded in Yarra Trams asset management system and records will be kept in line with our document management and retention procedures. In the case of tree pruning, records will be kept for seven years.

### 9.3 Restrictions on urgent works

The Clause 14 and Clause 15 of the regulations impose restrictions on urgent cutting and removal works as follows;

- The Responsible person must not **cut** a tree further than one metre from the minimum clearance space for an electric line span.
- The Responsible person must not **remove** the tree unless—
  - a) The tree has fallen or has become damaged and is to be removed to keep the minimum clearance space for an electric line span free of trees; or
  - b) A suitably qualified arborist has—
    - (i) Assessed the tree having regard to foreseeable local conditions; and
    - (ii) Advised the Responsible person that the tree is likely to imminently fall onto or otherwise come into contact with an electric line.

## 10 DISPUTE RESOLUTION

If in the instance of Electric Line Clearance carried by the VMC is not to the acceptable standard and a dispute is raised by a member of the public, a resident or an ORP, the VMC will be requested to attend a meeting at no cost to Yarra Trams.

Yarra Trams takes all reasonable steps to avoid a situation where the normal consultation and negotiation process in relation to tree pruning or clearance does not deliver a satisfactory outcome for all involved parties.

If an agreement cannot be achieved, a dispute resolution process is initiated and may include one or more of the following options;

- Mediation
- Arbitration
- Conciliation
- Counselling

If resolution cannot be achieved through the dispute resolution process, the matter is then referred to Energy Safe Victoria.

Listed below are the contact details of the person responsible for resolving such disputes between Yarra Trams and the members of the public;

<b>Position:</b>	Manager Facilities
<b>Address:</b>	E-Gate, Footscray Road, West Melbourne, VIC 3003 GPO Box 5231, Melbourne VIC 3001
<b>Ph.:</b>	03 9610 3200

### Escalation

If an aggrieved party needs to escalate the dispute, then a complaint shall be logged with the Energy and Water Ombudsman Victoria on 1800 500 509.



## 11 PERFORMANCE EVALUATION

The following procedures will be undertaken to assist in the assessing of the performance;

- The VMC inspection audit to be carried out in April/May each year, the results and pruning programs to be submitted to Yarra Trams no later than 1 July.
- Monthly VMC Contract Meetings to monitor the progress of the inspection and cutting programs.
- Cutting and safety audit to be carried out during cutting operation. Refer Appendix 5 – Audit Proforma.
- The Contractor will participate in scheduled auditing of works. Yarra Trams will audit five percent of the trees prune over the pruning cycle. The audit will be carried out immediately prior to the regular contract management meeting so that any issues can be discussed/addressed timely. As a minimum, the audit will include a minimum of two of the following areas;
  - Code compliance
  - Quality (AS4373)
  - Work Site Management /HSE
  - Personnel training, qualifications, and competency
  - Customer satisfaction

Any unsatisfactory performance will be recorded on the minutes of the meeting including any corrective actions, which will also be monitored for compliance. The contractor will rectify any non-conformance within 5 working days.

A monthly report will be produced for the monthly meeting outlining all works performed, inclusive of dates of attendance at each site.

Yarra Trams will audit a percentage of the trees pruned.

The following performance criteria (KPIs) will be assessed during the 2023/24 electric line clearance program:

- The number of pruning requests from the Yarra Trams Power & Overhead Department.
- The number of internal audit non-compliances.
- The number of emergency works/requests.
- Yarra Trams will record details of incidents relating to trees impacting on tram operations and other tree-related faults in its management system to enable the assessment of the Yarra Trams ELC Contract, performance of the Councils pruning programs and performance of the ELC Contractor.
- Number of call outs.
- Number of re-works/re-calls.
- An agenda item at monthly contract meetings will be to discuss the contractor's performance.
- Occupational Health & Safety audits and Job Safety Analysis paperwork.
- Completion of pruning programs according to schedule.
- Identified vegetation clearance breaches to the code.



## APPENDICIES

### Appendix 1 - Areas covered by this Electric Line Clearance Management Plan

STREET	START	END	STREET	START	END
LATROBE ST	HARBOUR ESPL	VICTORIA PDE	HARBOUR ESPL	FLINDERS ST EXTN	DOCKLANDS DRIVE
SPRING ST	NICHOLSON ST	FLINDERS ST	DOCKLANDS DRIVE	HARBOUR ESPLANADE	WATERFRONT CITY
PORT MELBOURNE RAIL RESERVATION	PORT MELB. TERMINUS	WHITEMAN ST	FOOTSCRAY ROAD SIDING	DOCKLANDS DRIVE	COSTCO
CLARENDON ST	ALBERT ST	FLINDERS STREET	SPENCER ST	FLINDERS ST	LATROBE ST
COLLINS ST	MERCHANT ST VICTORIA DOCK	SPRING ST	FLINDERS ST	HARBOUR ESPLANADE	SPRING ST
MACARTHUR ST	SPRING ST	CATHEDRAL PLACE	BOURKE ST	SPENCER ST	SPRING ST
GISBORNE ST	CATHEDRAL PLACE	VICTORIA PDE	EXHIBITION ST	FLINDERS ST	ROUTE 70 RESERVE
VICTORIA PDE	LA TROBE ST	HODDLE ST	ROUTE 70 RESERVE	FLINDERS ST	SWAN ST
VICTORIA ST	HODDLE ST	VICTORIA BRIDGE	SWAN ST	ROUTE 70 RESERVE	WALLEN RD. BRIDGE
BARKERS RD	VICTORIA BRIDGE	HIGH ST (KEW)	WALLEN RD	WALLEN RD. BRIDGE	RIVERSDALE RD
HIGH ST (KEW)	BARKERS RD	COTHAM RD	RIVERSDALE RD	POWER ST	ELGAR RD
COTHAM RD	HIGH ST (KEW)	BURKE RD	CHURCH ST (HAWT'N)	BURWOOD RD	BARKERS RD
WHITEHORSE RD	BURKE RD	MARKET ST	BURWOOD RD	CHURCH ST (KEW)	POWER ST
CHURCH ST (HAWT'N)	BARKERS RD	HIGH ST ENTRANCE	POWER ST	LISSON GVE	LISSON GVE
HIGH ST (KEW)	COTHAM RD	BURKE RD	CAMBERWELL RD	BURKE RD	TOORAK RD
DONCASTER RD	BULLEEN RD	BALWYN RD	TOORAK RD	CAMBERWELL RD	SOMER ST
SWAN ST	ROUTE 70 RESERVE	BURNLEY ST	BURWOOD HWY	SOMERS ST	HANOVER ST
WATTLETREE ROAD	DANDENONG RD	TERMINUS (BURKE RD)	CARLISLE ST-BALACLAVA RD	TERMINUS @ LUNA PARK	NORMANBY RD
FITZROY ST	ST KILDA RD	ESPLANADE	NORMANBY RD-SMITH ST-SIR JOHN MONASH DRIVE-PRINCESS HIGHWAY-WAVERELY RD	BALACLAVA RD	TERMINUS (DARLING RD)
ROYAL PDE	FLEMINGTON RD	BRUNSWICK RD	SWANSTON ST	UNIVERSITY TERMINUS	SOUTHBANK BLVD
SYDNEY RD	BRUNSWICK RD	TERMINUS (BAKERS RD)	ST. KILDA RD	SOUTHBANK BLVD	CARLISLE ST
VICTORIA ST	ERROL ST	HODDLE ST	DORCAS STREET-FEEDER		
QUEENSWAY	ST. KILDA RD	CHAPEL ST	BRIGHTON RD	CARLISLE ST	GLENHUNTLY RD
DANDENONG RD	CHAPEL STREET	GLENFERRIE RD	GLENHUNTLY RD	BRIGHTON RD	TRUGANINI RD TERMINUS
HAWTHORN RD	DANDENONG RD	NEPEAN HWY TERMINUS	ROYAL PARK	FLEMINGTON RD	BRUNSWICK RD
MARIBYRNONG RD-ASCOT VALE RD	PASCOE VALE RD TERMINUS	UNION RD	GRANTHAM ST - DAWSON ST	BRUNSWICK RD	MELVILLE RD
WESTS RD-WILLIAMSON RD-ROSAMOND RD	RALEIGH RD	RIVER ST	MELVILLE ROAD	DAWSON ST	BELL STREET TERMINUS



# Electric Line Clearance Management Plan



STREET	START	END	STREET	START	END
RIVER ST-GORDON ST	ROSAMOND RD	BALLARAT RD	SOUTHBANK BLVD-STURT ST	ST. KILDA RD	KINGSWAY
BALLARAT RD-DROOP ST-HOPKINS ST-LEEDS ST	GORDON ST	TERMINUS (FOOTSCRAY)	STURT ST-HEATHER RD-EASTERN RD-PARK ST	KINGSWAY	CLARENDON ST
ELIZABETH ST	TERMINUS (FLINDER ST)	ROYAL PDE	ERROL ST-QUEENSBERRY ST	VICTORIA ST	ABBOTSFORD ST
ACLAND ST	BARKLY ST	ESPLANADE	RACECOURSE RD	FLEMINGTON RD	EPSOM RD
ESPLANADE	ACLAND ST	FITZROY ST	BOURKE ST	SPENCER ST	SPRING ST
ST KILDA RAIL RESERVATION	FITZROY ST	WHITEMAN ST	GERTRUDE ST	NICHOLSON ST (F'ROY)	SMITH ST
LA TROBE ST	HARBOUR ESPL	VICTORIA PDE	SMITH ST	GERTRUDE ST	QUEENS PDE
SPRING ST	NICHOLSON ST	FLINDERS ST	QUEENS PDE	SMITH ST	URQUHART / HIGH
NICHOLSON ST	SPRING ST	BLYTH ST	HIGH ST (N'COTE)	URQUHART ST	DUNDAS ST
PARK ST (ST KILDA)	FITZROY ST	COWDEROY ST	PLENTY RD	DUNDAS ST	MCKIMMIES RD
PATTERSON ST	MCGREGOR ST	COWDEROY ST	WELLINGTON PDE	SPRING ST	JOLIMONT ST
DANKS ST	MILLS ST	MCGREGOR ST	WELLINGTON PDE	SIMPSON ST	HODDLE ST SIDING
MILLS ST	DANKS ST	BEACONSFIELD PDE	BRIDGE RD	HODDLE ST	HAWTHORN BDGE
CANTERBURY RD	ALBERT RD	MILLS ST	MORELAND RD	HOLMES ST	BRUNSWICK TRAM DEPOT
ALBERT ROAD	CLARENDON ST	CANTERBURY RD	GLENFERRIE RD	DANDENONG RD	TERMINUS (COTHAM RD)
BRUNSWICK ST	VICTORIA PDE	WATKINS ST	COMMERCIAL RD	ST. KILDA RD	CHAPEL ST
ST GEORGES RD	WATKINS ST	MILLER ST (THORN)	MALVERN RD	CHAPEL ST	BURKE RD
MILLER ST (THORN)	ST. GEORGES RD	GILBERT RD	BURKE ROAD	MALVERN RD	TERMINUS (COTHAM RD)
GILBERT RD	MILLER ST (THORN)	REGENT ST	VICTORIA AVE-BRIDPORT ST-PARK ST	CLARENDON ST	TERMINUS (BEACONSFIELD PDE)
HIGH STREET (MALVERN)	ST. KILDA RD	TERMINUS (MALVERN RD)	ELGIN ST-LYGON ST	UNIVERSITY TERMINUS	BLYTH ST
DOMAIN RD-PARK ST-TOORAK RD	ST. KILDA RD	TERMINUS (GLENFERRIE RD)	HOLMES ST	BLYTH ST	MORELAND RD
FLEMINGTON RD	ROYAL PDE	RACECOURSE RD	NICHOLSON ST	MORELAND RD	TERMINUS @ BELL ST INTERSECTION
MT. ALEXANDER RD	RACECOURSE RD	MOONEE POND JUNCTION	ABBOTSFORD ST	QUEENSBERRY ST	FLEMINGTON RD
PASCOE RD - FLETCHER ST	MOONEE POND JUNCTION	MT. ALEXANDER RD	RACECOURSE RD	FLEMINGTON RD	EPSOM RD
MT. ALEXANDER RD	FLETCHER ST	KEILOR RD	EPSOM RD	RACECOURSE RD	UNION RD
KEILOR RD	MT. ALEXANDER RD	MATTHEWS AVE	UNION RD	EPSOM RD	MARIBYRNONG RD
MATTHEWS AVE	KEILOR RD	TERMINUS	MARIBYRNONG RD	UNION RD	HURTLE RD
CHURCH ST (RICHMOND)	TERMINUS (VICTORIA ST)	TOORAK RD	RALEIGH RD	HURTLE ST	WESTS RD
CHAPEL ST	TOORAK RD	BRIGHTON RD	CORDITE AVE	WESTS RD	TERMINUS



STREET	START	END	STREET	START	END
PARK ST - KINGSWAY	ST. KILDA RD	QUEENSBRIDGE ST	PEEL ST	WILLIAM ST	FLEMINGTON RD
QUEENSBRIDGE ST	KINGSWAY	FLINDERS ST	ROYAL PDE	FLEMINGTON RD	BRUNSWICK RD
MARKET ST-FLINDERS LANE	FLINDERS ST	WILLIAM ST			
WILLIAM ST	FLINDERS LANE	PEEL ST			



Appendix 2 - Notice to Owner / Occupier

	<b>NOTICE OF PRUNING OR CLEARING</b>	
<b>Electricity Safety (Electric Line Clearance) Interim Regulations 2025</b>		

Dear Sir/Madam

As part of Yarra Trams Vegetation Management Plan, ETS INFRASTRUCTURE MANAGEMENT has been contracted to inspect its powerlines on a regular basis to improve safety and powerline reliability.

A recent inspection in your area has identified tree(s) within your property infringing on the clearances required around the powerlines, as specified in the Electricity Safety (Electric Line Clearance) Interim Regulations 2025. It is Yarra Trams policy to remove all hazardous branches overhanging powerlines and obtain clearance of at least one (1) meter, plus an allowance of three (3) years regrowth above, below and alongside the powerlines.

Extent of the pruning is indicated in the diagram below.

The following works are required on your property:

<input type="checkbox"/>	Trimming (Not Taped) ..... <b>You require no action unless you require further information prior to our commencement.</b> If you would prefer these trees to be removed rather than trimmed, please contact Yarra Trams within fourteen (14) days, this may incur a cost to you.
--------------------------	--

<input type="checkbox"/>	Removals (Taped) ..... <b>PLEASE NOTE THAT WE HAVE MARKED ANY TREES INSIDE YOUR PROPERTY TARGETED FOR REMOVAL WITH YELLOW TAPE.</b> If trees are marked, contact ETS within fourteen (14) days. <b>NO TREES WILL BE REMOVED WITHOUT YOUR PRIOR CONSENT</b>
--------------------------	--

<b>Impact to the Owner/Occupier</b> <input type="checkbox"/> No access to the property required <input type="checkbox"/> Limited/exclusive access to your front yard <input type="checkbox"/> Limited/exclusive access to your driveway <input type="checkbox"/> Use of Heavy machinery	<input type="checkbox"/> Duration 2-4hrs <input type="checkbox"/> Duration 4-8hrs <input type="checkbox"/> Other..... .....
---	--

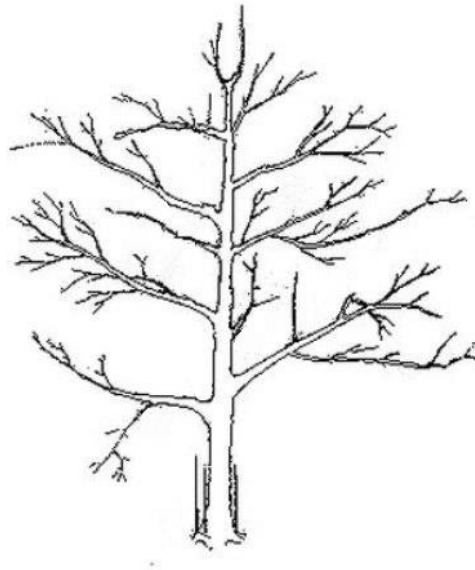
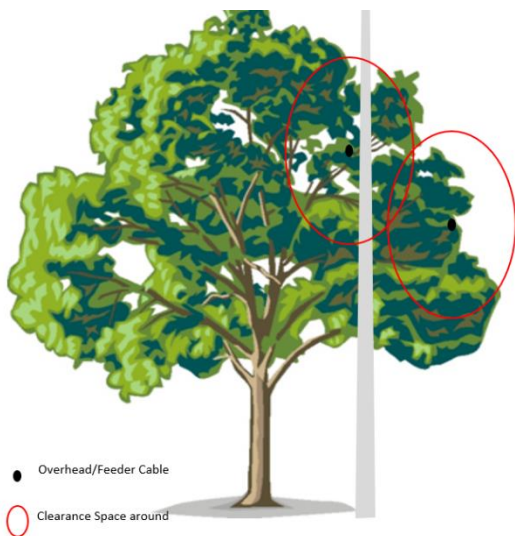
**THIS IS A FREE SERVICE**

This service is provided at No Charge and undertaken only by trained personnel in accordance with Part 8 of the Electricity Safety Act 1998 as outlined below.

**A sample schematic of the pruning required on your tree is shown at the back of this notice.**

**Thank you in advance for your cooperation**

## ETS INFRASTRUCTURE MANAGEMENT



For all inquiries contact Marty Campbell E: [mcampbell@ets.com.au](mailto:mcampbell@ets.com.au) M: 0487 333 397

**1. Training of Employees / Contactors**

All personnel involved in tree cutting have been trained in correct tree pruning techniques. All pruning is carried out in accordance with Australian Standards AS 4373 –2015 Pruning of Amenity Trees.

**2. Removal of Debris**

The branches of trees pruned or removed will be cleared away as soon as practicable. Any larger logs will be cut to manageable lengths and stacked neatly. Logs from trees that belong to you are yours to keep.

**3. Commencement of Works**

Tree cutting works will not commence until fourteen (14) days from the date and no later than 60 days of this letter. You require no action unless you require further information **OR** trees are identified for removal from your property.

**4. Rental Properties**

If you are a tenant of a rented property you should notify your landlord of the proposed works.

**5. Dispute resolution**

For dispute resolution lodge a complaint via the Department of Transport website;

<https://www.ptv.vic.gov.au/footer/customer-service/feedback-and-complaints>

or by telephone 1800 800 007



## Appendix 3 - Notice to Council

	<b>NOTICE OF PRUNING OR CLEARING COUNCIL TREES</b>	
<b>Electricity Safety (Electric Line Clearance) Interim Regulations 2025</b>		

Addressed to

Date:

Our Ref:

Dear

### **NOTICE FOR PRUNING / REMOVAL OF COUNCIL TREES GROWING NEAR YARRA TRAMS POWERLINES**

#### **Electricity Safety (Electric Line Clearance) Interim Regulations 2025**

Your Council and Yarra Trams have responsibilities in respect of tree trimming near tram powerlines. Where the Council is responsible for such tree trimming, Yarra Trams is pleased to do what it can to assist you to carry out these works safely.

In line with the procedure followed in the past by Yarra Trams and the City of Council, and in accordance with the notification requirements of Yarra Trams Vegetation Management Plan please find attached a list of trees identified as Council trees that have been categorised according to the location of the powerline (FD – side feeder, TR – trolley, SP – support network), and the present proximity of the infringing tree to that electric line. These trees require pruning to obtain a clearance that is appropriate to the clearance requirements specified in the Electricity Safety (Electric Line Clearance) Interim Regulations 2025.

To assist Council, develop a vegetation pruning program for trees in the vicinity of powerlines, which have been identified as being within the statutory clearance space, Yarra Trams has developed a priority coding, and a maximum Council response time as follows:

- Code 55 A trees that have been identified as touching the powerline.  
These trees are required to be scheduled within **three (3) weeks** and pruned urgently within the **next 2 months**.
- Code 56 A trees that have been identified as likely to touch the powerline very soon or the tree has overhanging branches which have been assessed as currently having a high risk / probability of damaging the powerline.  
These trees are required to be pruned within the **next 6 months**.

The trees on the attached list present potential hazards to tram operations, Yarra Trams employees and the public. Consequently, Yarra Trams requires the Council, as owner of the trees, to comply with this notice within the periods specified above for codes 55 & 56 (whichever applicable) from the date of this notice.

Under the Electricity Safety (Electric Line Clearance) Interim Regulations 2025 and whenever the Council is the Responsible Person, the Council is responsible for the keeping of the whole or any part of a tree clear of our electric lines. Yarra Trams also reminds you that the Council will be liable if an incident occurs because



of the Council's failure to maintain the clearance space around an electric line involving any tree for which the Council is the Responsible Person.

Please advise Yarra Trams in writing when these necessary works have been undertaken. Alternatively, immediately advise Yarra Trams in writing if the Council is unable to fully comply with this notice. Please note that in the event that any legal proceedings arise from damage caused to property or persons as a result of your failure to comply with this request, copies of this correspondence will be placed before the courts in order to determine liability.

If your contractor is not qualified to trim trees using live line techniques, please contact Yarra Trams immediately and we will endeavour, if it is possible, to arrange for the electricity supply to be shut down, so that work can be carried out.

In order to carry out these shutdowns efficiently, Yarra Trams needs at least two weeks' notice in writing.

Naturally, Yarra Trams requires at all times to maintain supply for its tram operations and occasionally it may not be able to carry out the powerline shut down you require. In those circumstances, live line work would be necessary, and an appropriately qualified contractor would need to be engaged by you to carry out the work.

Where a shutdown is possible, Yarra Trams will charge for its operational expenses. We will quote the particular cost that will apply to each circumstance.

The information in this document is provided to Council in good faith to assist you to fulfil your obligations in relation to tree clearing. This information does not diminish Council's obligations in relation to tree clearing. Council should ensure that it conducts its own audit of trees that are growing near powerlines that it is responsible for.

For further information regarding this matter, please contact me on 0438 017 033

Yours sincerely,

Marty Campbell

ETS Infrastructure Management

62 Industrial Park Drive, Lilydale, Vic, 3140

E [mcampbell@ets.com](mailto:mcampbell@ets.com) M : 0487 333 397

<http://www.eastertrees.com>

cc Energy Safe Victoria



### Appendix 4 - Notice for urgent pruning

	<b>NOTICE OF PRUNING OR CLEARING</b>	
<b>Electricity Safety (Electric Line Clearance) Interim Regulations 2025</b>		

Date Issued:	
Reference:	
Address:	
Structure:	

Dear Customer,

As part of Yarra Trams Vegetation Management obligations under the Electricity Safety (Electric Line Clearance) Interim Regulations 2025, powerlines are regularly inspected in your area.

Vegetation contacting or situated close to power lines can present a safety risk to people and property and in extreme situations may cause an electricity supply interruption or a fire.

- Tree/s within your property have been identified as posing an urgent threat to Yarra Trams electrical assets as well as public safety and will be actioned accordingly. These works are programmed to be carried out between the following dates;
- Tree/s within your property were identified as posing an immediate threat to Yarra Trams assets as well as public safety and were actioned immediately.
- Tree/s within your property failed of its/their own accord. It is the property owner’s responsibility to dispose of all vegetation debris resulting from the urgent tree cutting or removal work recently undertaken by Yarra Trams.

Please Note

A qualified contractor engaged by Yarra Trams will carry out this work. These works are provided at no charge to the customer.

For any enquiries please contact Marty Campbell,

E: [mcampbell@ets.com](mailto:mcampbell@ets.com)

M: : 0487 333 397

<p><b>For any enquiries please contact Marty Campbell</b> ,</p> <p><b>E: <a href="mailto:mcampbell@ets.com">mcampbell@ets.com</a></b></p> <p><b>M: : 0487 333 397</b></p>
---



### Appendix 5 - Audit Proforma

	<b>AUDIT PROFORMA - ELECTRICAL LINE CLEARANCE - SITE SAFETY INSPECTION</b>	
<b>Electricity Safety (Electric Line Clearance) Interim Regulations 2025</b>		

Activity: To undertake Electrical Line Clearance of vegetation to Yarra Trams Electrical assets.		
Date:	Time:	Location:
Company :		Auditor :

Company Representative :	Role:
Crew in attendance	

No	GENERAL	Yes	No	NA
1.1	Attended and signed onto Prestart prior to work			
1.2	Vehicle prestart inspection completed			
1.3	Crew have all appropriate cards /licences to be able to perform the task			
1.4	SWMS available for the task			
1.5	All tools and equipment checked for compliance.			

No	PERSONAL PROTECTIVE EQUIPMENT & CLOTHING	Yes	No	NA
2.1	PPE as per SWMS			
2.2	PPE & Clothing in good condition (including High Vis & Hard Hat)			
2.3	Specialist hand protection (e.g. Gloves)			
2.4	Safety eye protection (Glasses / Goggles / Shield)			
2.5	Any other special PPE requirement (please specify)			

No	JOB PLANNING	Yes	No	NA
3.1	Job hazards identified, recorded and discussed prior to commencement			



3.2	Job hazards controls measures implemented.			
3.3	Appropriate Permit obtained (note permit type) Isolation of LV overhead as required			
3.4	Adjacent Live sections identified, and limits of approach confirmed.			
3.5	OC / Power Centre advised of work			
3.6	Safety Observer in pace			

No	TRAFFIC MANAGEMENT	Yes	No	NA
4.1	Appropriate traffic management in place			
4.2	Traffic signage, cones etc. in good condition			

No	PRUNING ( as per AS4373)	Yes	No	NA
5.1	Equipment appropriate for the Task			
5.2	Pruning undertaken in safe manner			
5.3	Clearances achieved.			
5.4	Site left clean and tidy			

GENERAL COMMENTS	Yes	No	NA

Is corrective action required  No  Yes

Corrective actions required			Completion Signoff		
Description	By Whom	By When	Date	By Whom	Action taken

Signed .....



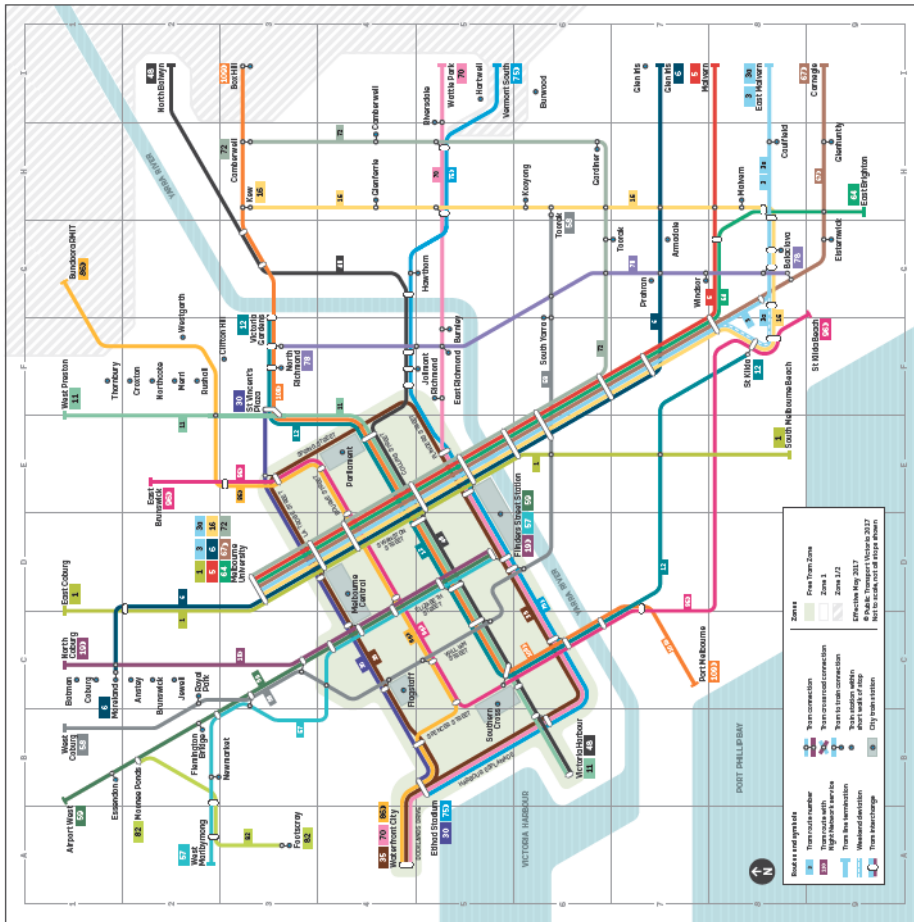
Appendix 6 - Network map



Tram routes	Via
1	East Coburg – South Melbourne Beach Lygon Street, Burenwick, City, South Melbourne
3	Melbourne University – East Malvern (weekdays) City, St Kilda Road, Balacava, Caulfield North
3a	Melbourne University – East Malvern (weekends) City, St Kilda Road, St Kilda, Balacava, Caulfield North
5	Melbourne University – Malvern City, Dandenong Road, Windsor, Armadale
6	Moreland – Glen Iris Lygon Street, Burenwick, City, High Street, Armadale
11	West Preston – Victoria Harbour Docklands St Georges Road, Northcote, Brunswick Street, Fitzroy, City
12	Victoria Gardens – St Kilda (Fitzroy Street) Victoria Street, Richmond, City, South Melbourne
16	Melbourne University – Kew City, St Kilda Beach, Glenferrie Road, Malvern
19	North Coburg – Flinders Street Station Sydney Road, Coburg, Brunswick, Parkville, City
30	St Vincent's Plaza – Etheld Stadium Docklands La Trobe Street, City
35	City Circle Docklands, La Trobe Street, Flinders Street
48	North Balwyn – Victoria Harbour Docklands Kew, Bridge Road, Richmond, City
57	West Maribymong – Flinders Street Station Raeceuse Road, Flemington, North Melbourne, City
58	West Coburg – Toorak Brunswick West, City, Toorak Road, South Yarra
59	Airport West – Flinders Street Station Mt Alexander Road, Essendon, Flemington, City
64	Melbourne University – East Brighton City, Balacava, Glenhuurly Road, Elsternwick
67	Melbourne University – Carnegie City, Balacava, Glenhuurly Road, Elsternwick
70	Wattle Park – Waterfront City Docklands Riversdale Road, Surrey Hills, Richmond, City
72	Melbourne University – Camberwell City, Commercial Road, Prahran, Camberwell
73	Vermont South – Etheld Stadium Docklands Burwood, Hawthorn, Bridge Road, Richmond, City
78	North Richmond – Balacava Chapel Street, South Yarra, Prahran, Windsor
82	Moonee Ponds – Footscray Droop Street, Maribymong Road
85	Bundoora RMIT – Waterfront City Docklands Preston, High Street, Northcote, Collingwood, City
98	East Brunswick – St Kilda Beach Nicholson Street, Fitzroy, City, Albert Park
100	Box Hill – Port Melbourne Whitehorse Road, Mont Albert, City, Southbank

Tram destinations		
Airport West	B1	East Malvern
Balaclava	68	Eltham Stadium
Box Hill	13	Flinders Street Station
Bundoora RMIT	G1	Footscray
Camberwell	H3	Glen Iris
Carnegie	H9	Kew
East Brighton	19	Malvern
East Brunswick	E2	Melbourne University
East Coburg	D1	Moonee Ponds
	18	Moreland
	B5	North Balwyn
	D5	North Coburg
	A3	North Richmond
	H7	Port Melbourne
	H3	South Melbourne Beach
	H7	St Kilda
	D3	St Kilda Beach
	B2	St Vincent's Plaza
	C1	Toorak
	I2	Vermont South
	G3	Victoria Gardens
	B6	Victoria Harbour
	A4	Waterfront City
	I5	Wattle Park
	B1	West Coburg
	A2	West Maribymong
	F1	West Preston

Melbourne tram network



For more public transport information visit [ptv.vic.gov.au](http://ptv.vic.gov.au) or call 1800 800 007.

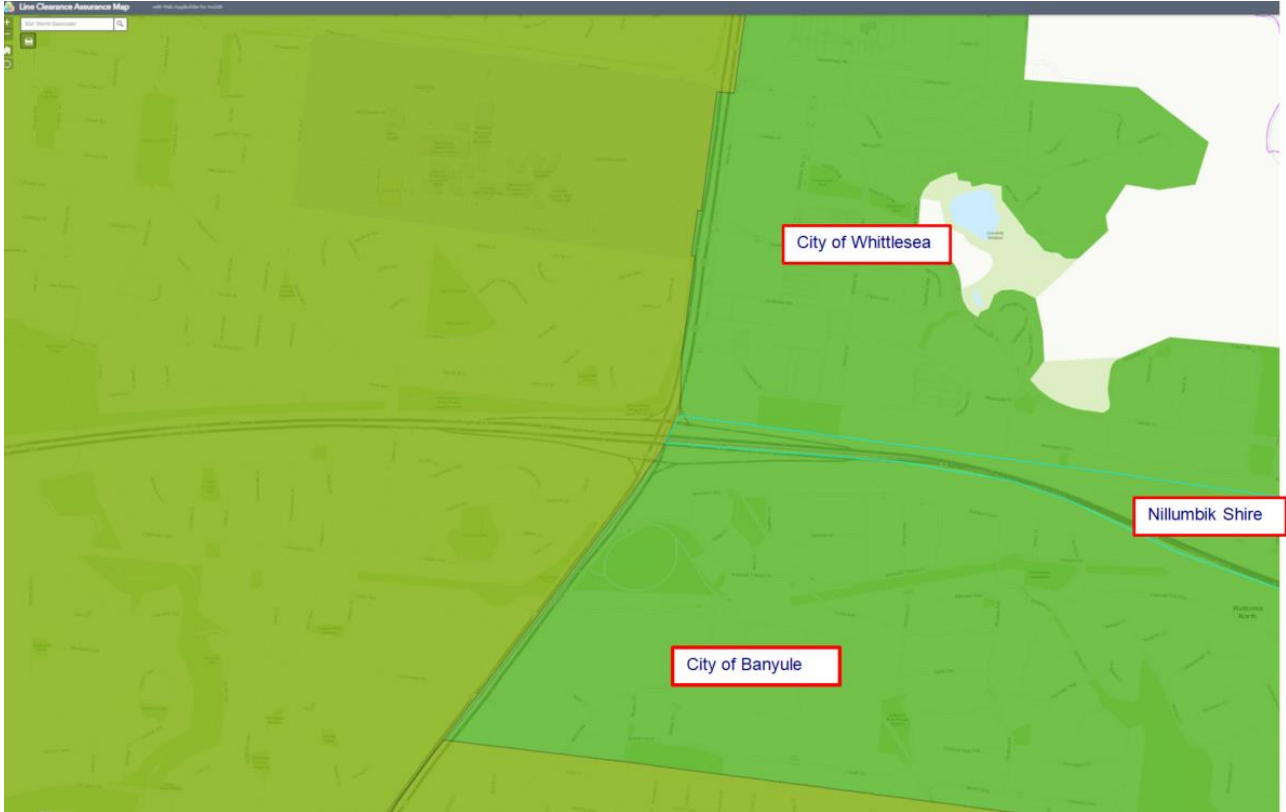


PTV1213/17. Authorised by Public Transport Victoria, 759 Collins Street, Docklands



### Appendix 7 - Non-Declared Areas

Yarra Trams has a small section of lines in non-declared area on Plenty Road, Bundoora. Trams are running in median of Plenty Rd, which is a VicRoads major road and therefore the trees are the accountability of VicRoads, transferred onto Yarra Trams.



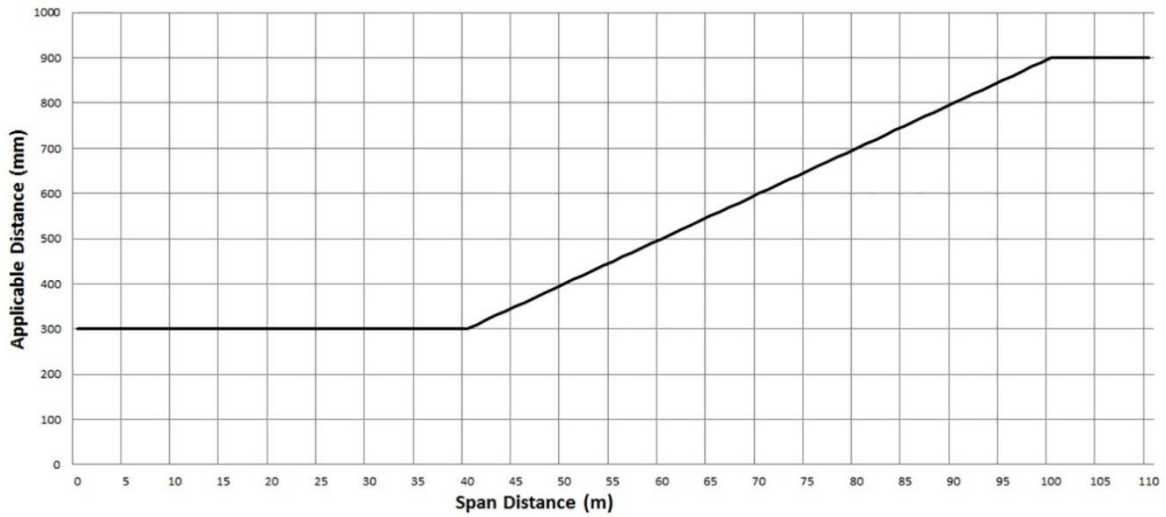


### Appendix 8 - Electrical Regulations graph 1

Schedule 2 – Applicable distance for middle two thirds of a span of an electric line.

Graph 1 – INSULATED ELECTRIC LINES IN ALL AREAS

Clauses 3 and 24



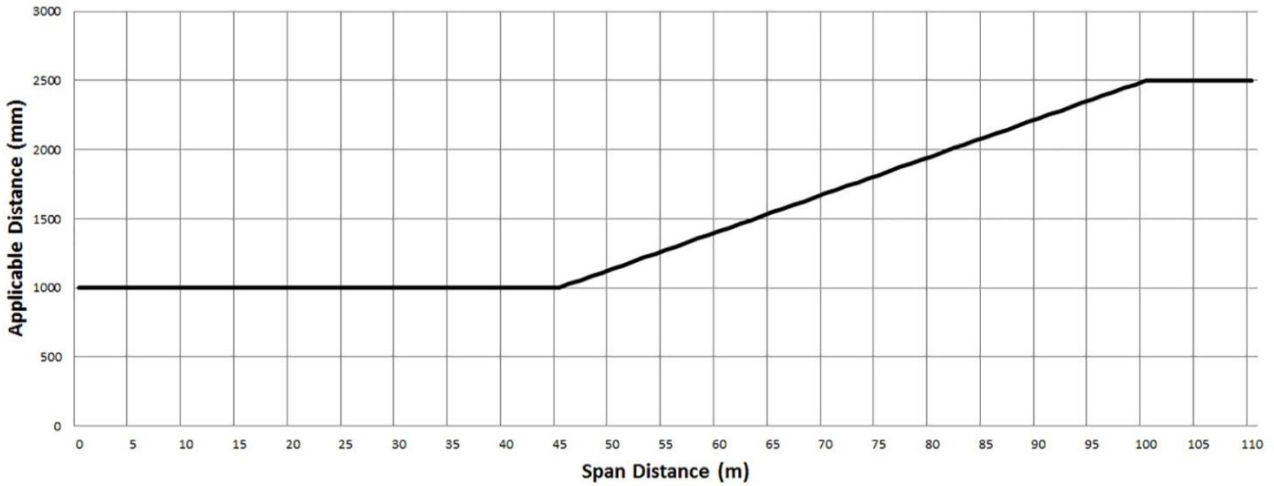


### Appendix 9 - Electrical Regulations graph 2

Schedule 2 – Applicable distance for middle two thirds of a span of an electric line.

Graph 2 – UNINSULATED LOW VOLTAGE ELECTRIC LINES IN LOW BUSHFIRE RISK AREA.

Clauses 3 and 25





## Appendix 10 - Details of affected Councils

Contact Details of affected ELCMP Councils					
Council	Name	Position	Mobile	Email	Postal Address
Banyule			03 9490 4222	<a href="mailto:enquiries@banyule.vic.gov.au">enquiries@banyule.vic.gov.au</a>	1 Flintoff Street, Greensborough VIC 3088
Bayside	Adrian Runco	Open Space Arborist	03 9261 7115	<a href="mailto:arunco@bayside.vic.gov.au">arunco@bayside.vic.gov.au</a>	PO Box 27, Sandringham VIC 3191
Boroondara	Adam Johnstone	Vegetation Compliance Team Leader	03 9278 4444	<a href="mailto:adam.johnstone@boroondara.vic.gov.au">adam.johnstone@boroondara.vic.gov.au</a>	31-35 Hutchinson Drive, Kew VIC 3101
Darebin	Euan Rugg	Operations Arborist	0419 764 416	<a href="mailto:euan.rugg@darebin.vic.gov.au">euan.rugg@darebin.vic.gov.au</a>	PO Box 91, Preston VIC 3072
Glen Eira	Vilnis Saulitis	Urban Forest Team Leader - Tree Maintenance & Compliance	03 9524 3861	<a href="mailto:vsaulitis@gleneira.vic.gov.au">vsaulitis@gleneira.vic.gov.au</a>	PO Box 42, Caulfield South VIC 3162
Maribyrnong	Bryson French	Coordinator Urban Forest	0481 067 328	<a href="mailto:bryson.french@maribyrnong.vic.gov.au">bryson.french@maribyrnong.vic.gov.au</a>	PO Box 58, West Footscray VIC 3012
Melbourne City Council	Natasha Stoikos	Senior Parks Operations Officer	0437 194 812	<a href="mailto:natasha.stoikos@melbourne.vic.gov.au">natasha.stoikos@melbourne.vic.gov.au</a> / <a href="mailto:trees@melbourne.vic.gov.au">trees@melbourne.vic.gov.au</a>	GPO Box 1603, Melbourne VIC 3001
Moonee Valley	Mick Miggiani	Tree Program Supervisor	0413 835 029	<a href="mailto:mmiggiani@mvcc.vic.gov.au">mmiggiani@mvcc.vic.gov.au</a>	PO Box 126, Moonee Ponds VIC 3039
Merri-bek	Mark Somerville	Line Clearance Surveillance Officer	03 8311 4325	<a href="mailto:msomerville@merri-bek.vic.gov.au">msomerville@merri-bek.vic.gov.au</a>	Locked Bag 10, Brunswick VIC 3056
Port Philip	Shane Hall	Senior Arborist	03 8563 7496	<a href="mailto:shane.hall@portphilip.vic.gov.au">shane.hall@portphilip.vic.gov.au</a>	Private Bag 3, St Kilda VIC 3182
Stonnington	Marc Coustley	Arborist	0456 051 127	<a href="mailto:mcoustle@stonnington.vic.gov.au">mcoustle@stonnington.vic.gov.au</a>	PO Box 58, Malvern VIC 3144
Whitehorse	Dale Belmore	Coordinator Arbor	0403 231 150	<a href="mailto:dale.belmore@whitehorse.vic.gov.au">dale.belmore@whitehorse.vic.gov.au</a>	PO Box 14818, Melbourne VIC 8001
Whittlesea			03 9217 2170	<a href="mailto:info@whittlesea.vic.gov.au">info@whittlesea.vic.gov.au</a>	Locked Bag 1, Bundoora MDC VIC 3083
City of Yarra	Lisa Coffa	Coordinator Open Space Services (Acting)	0407 352 739	<a href="mailto:lisa.coffa@yarracity.vic.gov.au">lisa.coffa@yarracity.vic.gov.au</a>	PO Box 168, Richmond VIC 3121



## RELATED LEGISLATION & DOCUMENTS

Name	Document number
Electricity Safety (Electric Line Clearance) Interim Regulations 2025	Regulations
Electricity Safety (General) Regulations 2019	Regulations
Environment Management and Sustainability Plan (2017-2025)	SS-004-PL-0001
Fire Prevention Plan (2024-25)	IN-019-PL-0001
Vegetation Management Plan (2024-25)	IN-019-PL-0006

## DOCUMENT VERSION CONTROL

Version History	Date	Detail
1.0	4/6/2020	First published version
1.01	18/06/2020	Remove highlights from ETS letter and include on page ETS Audit Proforma form
1.02	18/08/2020	'AND LEGISLATION' added to Related Documents table to allow adding 'Electricity Safety (General) Regulations 2019' All instances of authorised (referring to the VMC) replaced by qualified
1.03	1/10/2020	Training Matrix updated
1.04	1/07/2021	Changed 'Electricity Safety (Electric Line Clearance) Regulations 2015' to 'Electricity Safety (Electric Line Clearance) Regulations 2020' and all associated references as per the Regulations.
2.0	13/09/2021	Updated as per the feedback received from ESV.
2.01	01/03/2022	Review undertaken no changes required
3.0	05/07/2023	Updated Org structure, contact numbers and references
3.01	7/08/2023	Fix publish date
4.0	12/09/2023	Major update of plan and review by ESV
4.01	13/10/2023	Minor update following review by ESV
4.02	23/10/2023	Minor fix to version number and published date
4.03	18/07/2024	Updated links and department names
4.04	1/4/2025	Updated names and org structure after Franchise change
4.05	1/4/2026	Changed 'Electricity Safety (Electric Line Clearance) Regulations 2020' to 'Electricity Safety (Electric Line Clearance) Interim Regulations 2025' and all associated references as per the Regulations.



## Yarra Trams

Infrastructure Function

E-Gate, West Melbourne.

Level 3, 555 Bourke Street  
Melbourne VIC 3000.

[www.yarratrams.com.au](http://www.yarratrams.com.au)