

# TRAM NETWORK UPGRADES



## Tram track and overhead power lines renewal

**Glenferrie Road between Malvern Road and High Street, Malvern**

**Preliminary works: Sunday 13 September to Saturday 19**

**September 2020**

**Major works: Saturday 19 September to Friday 25 September 2020**

**Overhead works: Monday 21 September to Friday 25**

**September 2020**

Public Transport Victoria (PTV) in partnership with Yarra Trams will commence work to renew tram tracks and the overhead network on Glenferrie Road between Malvern Road and High Street, Malvern.



**Works**



**Dates**



**Noise**



**Roads**

Works	Dates	Noise	Roads
Preliminary works	Sunday 13 September to Saturday 19 September	Medium to high day and night works	Parking removal, traffic management in place
Major works	Starting at 2am Saturday 19 September to 5am Friday 25 September	High level noise 24 hour works	Road closure in work zone. Traffic management in place
Overhead works	Starting at 8pm Monday 21 September to 5am Friday 25 September	Medium to high day and night works	Road closure in work zone. Traffic management in place

## Preliminary works



Preliminary works such as pre-welding of new tram tracks will take place between Sunday 13 September and Saturday 19 September 2020. **Please refer to the attached map for the exact location of this work.**

This work will be carried out during the day and at night if required (weather dependent).

Noise will be mostly contained to the day time hours but there may be a requirement for some periods of noisy work at night.

## Major works



Major works will involve the replacement of tram tracks, poles and overhead wiring on Glenferrie Road between Malvern Road and High Street, Malvern.

These works will require a full road closure of Glenferrie Road between Malvern Road and High Street from 2am Saturday 19 September to 5am Friday 25 September 2020.

Traffic management and detours will be in place. Please follow all detour signage.

## Overhead works



Overhead works will involve the renewal of the overhead wiring at the intersection of Malvern Road and Glenferrie Road, Malvern.

These works will require a full closure of the intersection of Malvern Road and Glenferrie Road from 8pm Monday 21 September to 5am Friday 25 September 2020.

Traffic management and detours will be in place. Please follow all detour signage.

## Public transport changes

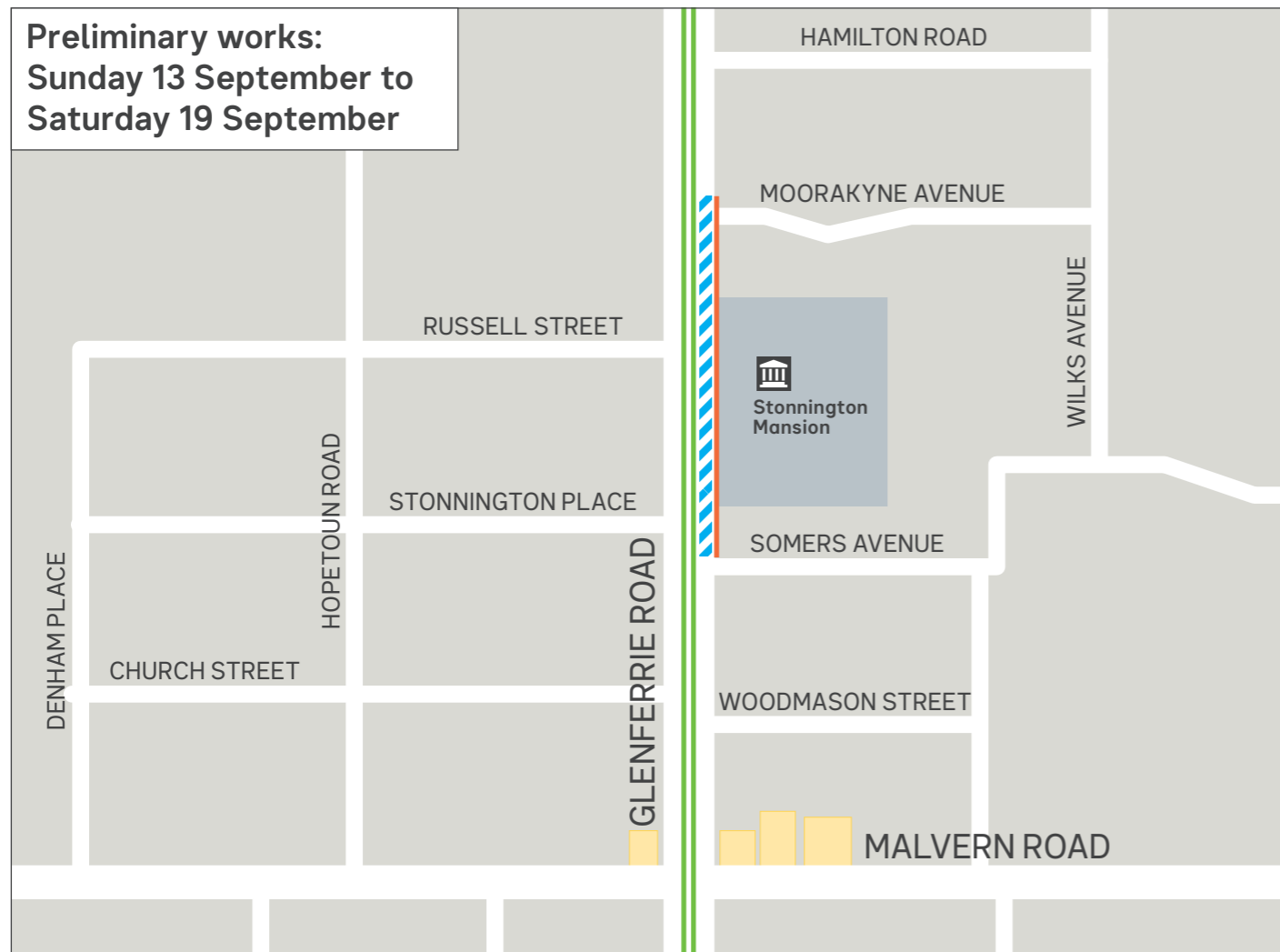


During the major works, **tram route 16** will be affected.

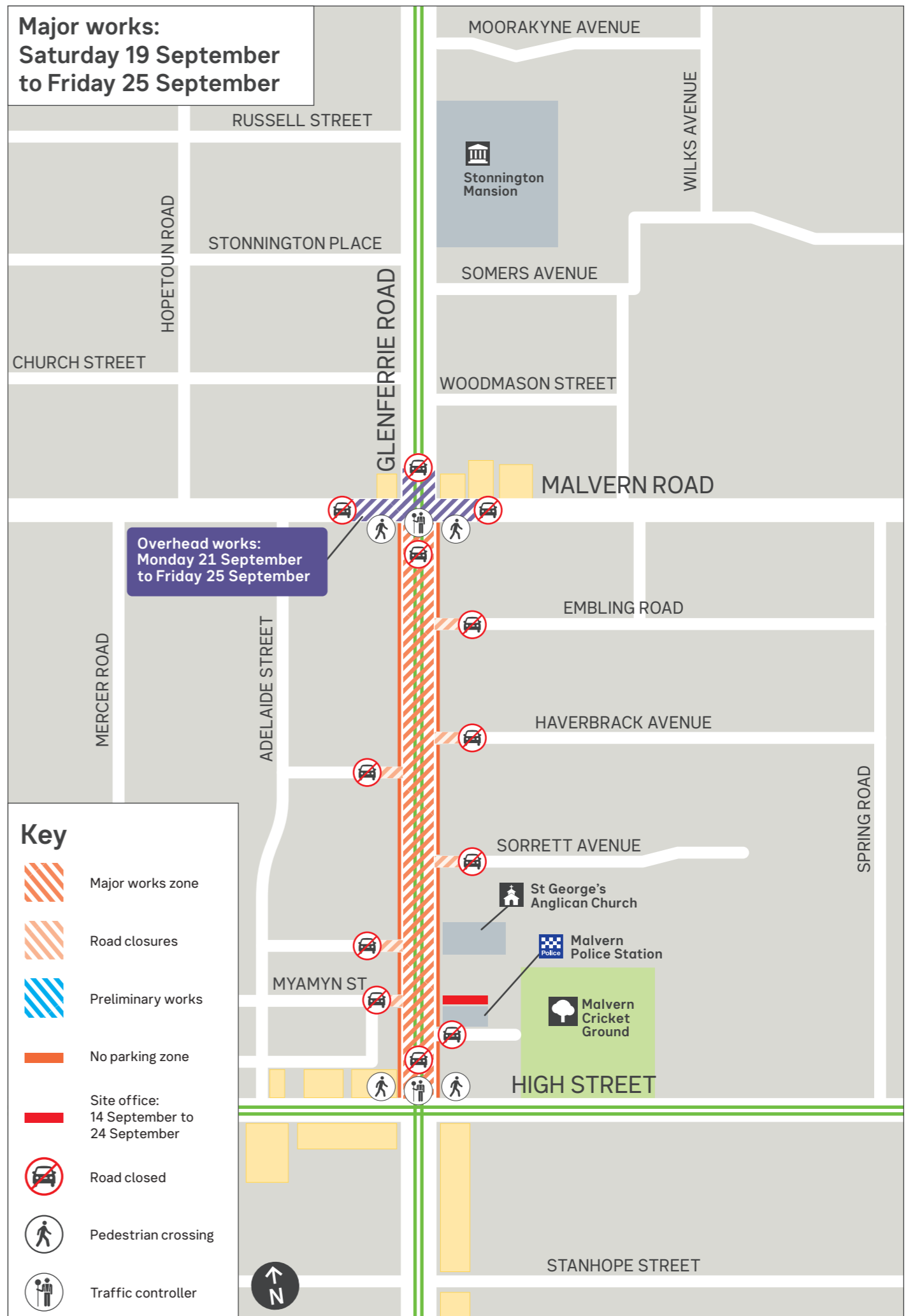
During the overhead works, **tram route 72** will be affected.

For more details closer to the time, please visit [yarratrams.com.au/servicechanges](http://yarratrams.com.au/servicechanges)

### Preliminary works: Sunday 13 September to Saturday 19 September



### Major works: Saturday 19 September to Friday 25 September



## Motorists



During the overhead works, the intersection of Malvern Road and Glenferrie Road will be closed to through traffic.

During the major works, Glenferrie Road between Malvern Road and High Street will be closed to through traffic.

No vehicle access will be permitted during this time.

## Local community



Access to shops and local infrastructure will remain unchanged during the works. Yarra Trams encourages you to allow some extra time when moving around the area while work is being done.

As this work is necessary to maintain a safe tram network as required by the *Rail Management Act 1996* (Vic), Yarra Trams will not compensate any third parties for any losses incurred during the project.

## Local businesses



The businesses located around the works area will remain open during the works. Please continue to support your local businesses during these essential infrastructure works.

Pedestrian access to these businesses will remain open at all times.

As this work is necessary to maintain a safe tram network as required by the *Rail Management Act 1996* (Vic), Yarra Trams will not compensate any third parties for any losses incurred during the project.

## Pedestrians



The work zone will be fenced off for safety, however footpaths will remain open around the work area to allow pedestrian access to businesses and residences located around the work zone.

Please note that there will be kerb to kerb fencing which will limit pedestrian crossings. These fences are required to ensure public safety.

Crossing points will be facilitated where possible and may change depending on the construction activities taking place.

## Noise and dust



Associated noise and dust from machinery, vehicles and work crews is unavoidable. In order to finish these works as quickly as possible, works will take place 24 hours a day and will generate high levels of noise. If work was kept to a 'day time only' schedule, the disruption to tram services, motorists and the community would be substantially longer.

We apologise for the inconvenience this work causes and appreciate your understanding.

## Local access and parking



There will be no local or driveway access on Glenferrie Road between Malvern Road and High Street from 2am Saturday 19 September to 5am Friday 25 September. Street parking will also be temporarily removed throughout the major works.

**Residents are encouraged to park in further surrounding streets prior to the works commencement date, noting local parking restrictions.**

Parking and local access will be reinstated on completion of works.



For information in other languages:

普通話	9321 5454	廣東話	9321 5441
Italiano	9321 5444	ਪੰਜਾਬੀ	9321 5445
Ελληνικά	9321 5443	हिन्दी	9321 5442
Việt-ngữ	9321 5449	தமிழ்	9321 5446
عربي	9321 5440	Español	9321 5447

If your language isn't listed visit [ptv.vic.gov.au/languages](http://ptv.vic.gov.au/languages) or call **9321 5450**.

**Critical infrastructure projects will continue during Stage 4 restrictions. This includes safety and maintenance works on roads and public transport, and road safety projects that maintain critical safe operations on the road network. To ensure the safety of all workers and the community, all construction and maintenance work undertaken will operate under a High Risk COVID Safe plan.**