

Wellington Parade tram terminus upgrade



We're upgrading the Wellington Parade tram terminus near Simpson Street, East Melbourne, to improve safety.

The upgrade will also provide extra capacity to run more tram services during special events.

A safer terminus

We're improving the safety of the terminus by:

- Elevating the tracks to separate trams from the road.
- Installing traffic signals to improve the intersection for motorists and trams.
- Providing additional traffic islands to reduce illegal vehicle movements.
- Providing a safe pedestrian pram crossing from Weedon Reserve to the northern side of Wellington Parade.
- Upgrading street lighting.
- Installing formal driver walkways and facilities.
- Renewing the current track and overhead infrastructure, which are more than 30 years old.

Moving Melbourne during special events

By upgrading the terminus, Yarra Trams will be able to store up to eight low floor trams during special events. The increased capacity and safety improvements will mean improved tram operations, particularly during special events.



Wellington Parade tram terminus upgrade



Construction

We completed some investigation work in August and September 2019 to help inform our designs.

Early work, such as track welding, site establishment and pole installation will start in mid February 2020.

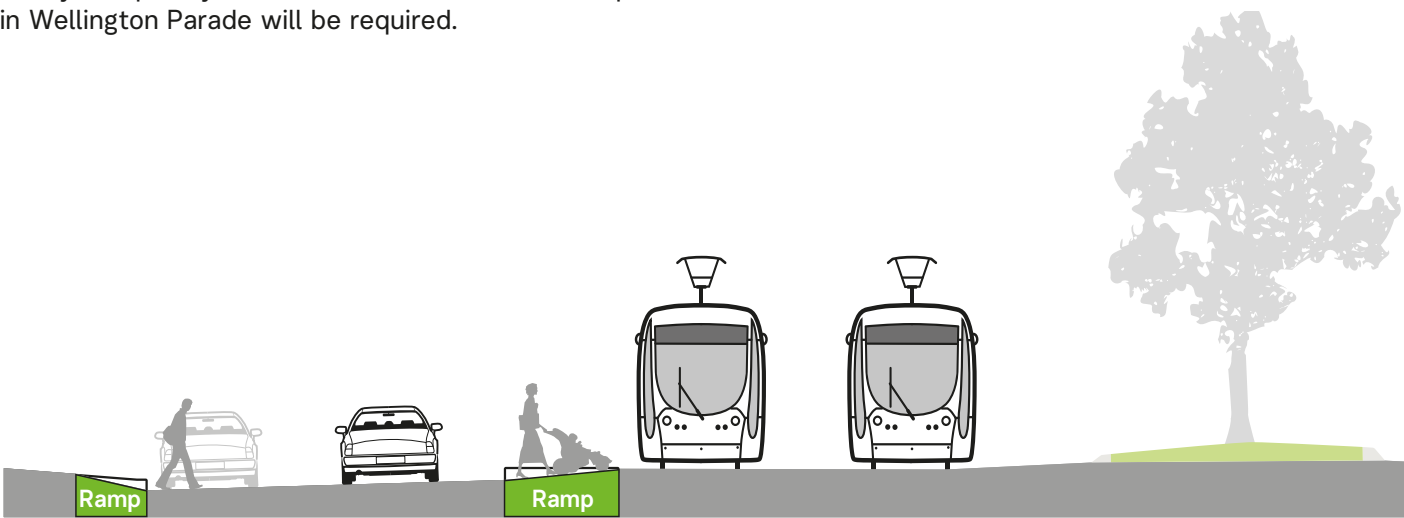
Major works are planned for a one-week period from late February to early March.

To allow our workers to get in and out quickly and safely, temporary closure of traffic lanes and car parks in Wellington Parade will be required.

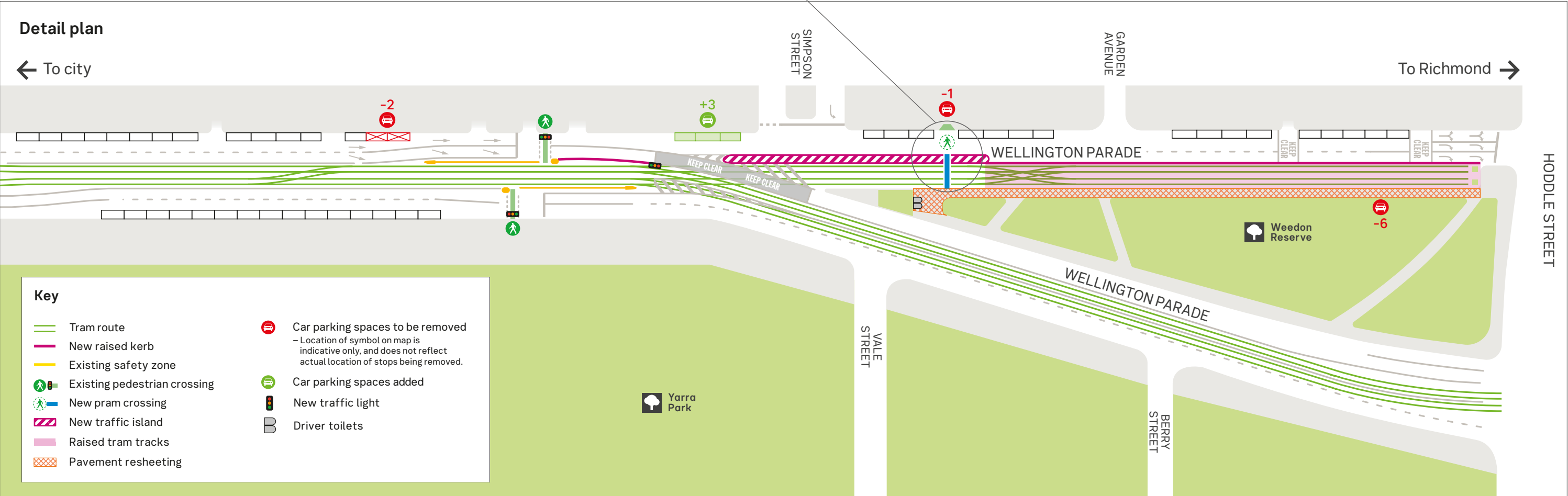
Pedestrian and localised traffic access to side streets will be maintained.

At the same time, Yarra Trams will be renewing the tram tracks and overhead wires along Wellington Parade.

Doing these works together reduces the need for separate road closures and impacts on the community.



Artist impression of the terminus after the upgrade



Community drop-in sessions

To find out more about this tram terminus upgrade project, attend a drop-in session.

Session 1:

10am to 12pm
Saturday 16 November
The Tippler & Co
58 Wellington Parade, East Melbourne



Session 2:

5.30pm to 7.30pm
Tuesday 19 November
The Tippler & Co
58 Wellington Parade, East Melbourne

Please note there will be no formal presentation. You can drop in anytime during the two hours to view information and talk to the project team.

More information

To find out more about the project:

-  yarratrams.com.au/projects
-  1800 800 007
-  projects-comm@yarratrams.com.au

If you are deaf, or have a hearing or speech impairment, you can contact us directly or through the National Relay Service and request to call **1800 800 007**.



For information in other languages:

普通話	9321 5454	廣東話	9321 5441
Italiano	9321 5444	ਪੰਜਾਬੀ	9321 5445
Ελληνικά	9321 5443	हिन्दी	9321 5442
Việt-ngữ	9321 5449	සිංහල	9321 5446
عربي	9321 5440	Español	9321 5447

If your language isn't listed visit ptv.vic.gov.au/languages or call **9321 5450**.

